

National Institute of Public Health





Greeting: a New Era in Public Health

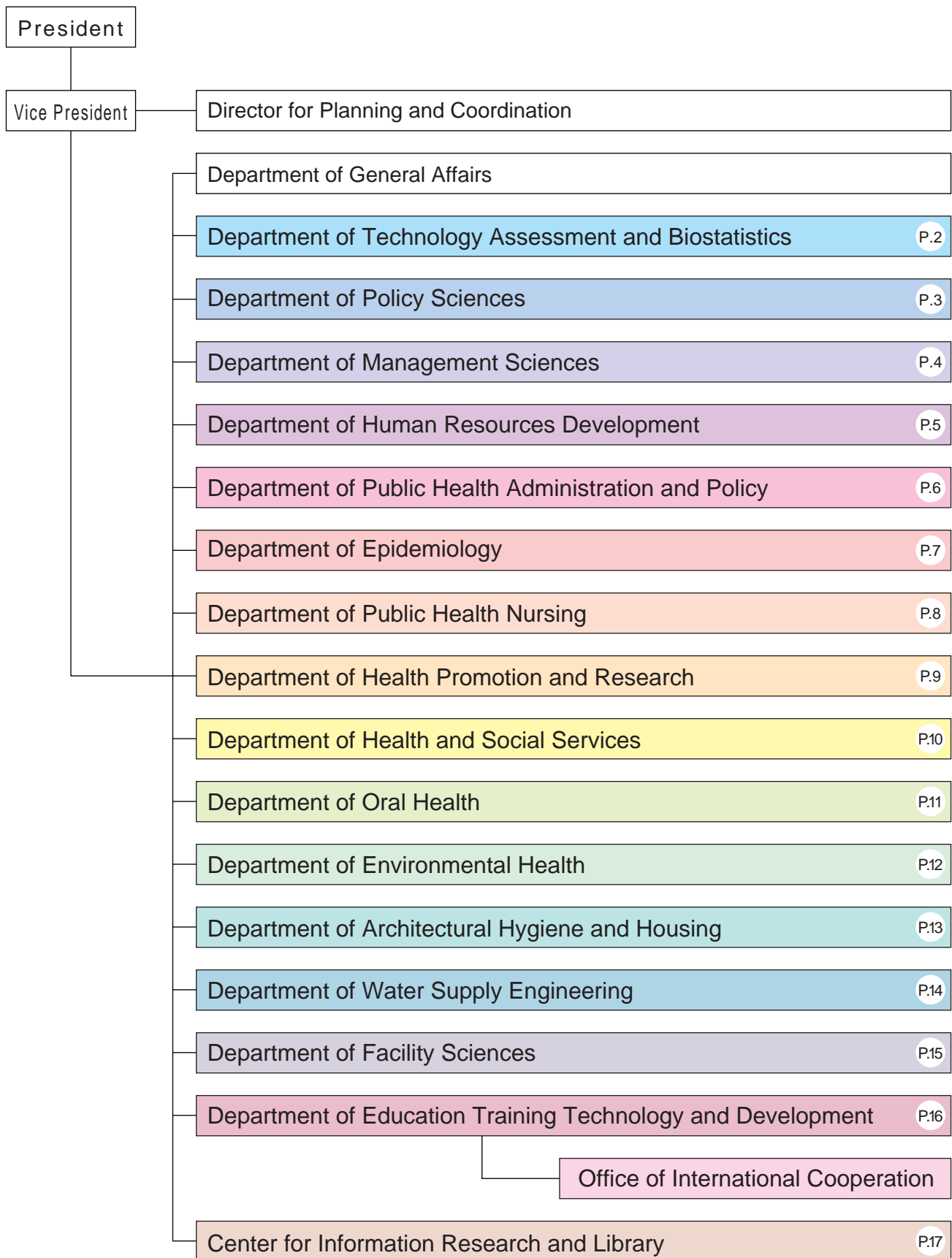
The National Institute of Public Health was founded on April 1, 2002. It integrated the former National Institute of Public Health, the former National Institute of Health Service Management and the Oral Sciences Department in the National Institute of Infectious Diseases, and added a new Social Services department. It is a new organization that serves to nurture and train municipal employees in the areas of public health, health care, sanitation and hygiene, and social welfare, and also carries out studies and research activities related to these fields. A new laboratory wing opened on October 1, 2004, and moves from the Shirogane and Toyama buildings were completed, uniting the entire research department on the Wako site.

The Institute has just been restructured with training as its main function, and the staff of about 300 people including part-time employees now takes in about 3,000 trainees annually, about five times the number before the restructuring. It offers long-term programs, focusing on the Master of Public Health, a one-year course; a qualification course for directors of public health centers; an international health care course taught year-round in English, mainly by foreign lecturers; courses on clinical trials; training courses for hospital management; training courses for community health and social services; and courses aim to improve the environment of daily life. Starting in fiscal 2005, a program in health risk management focusing on infectious diseases will be offered jointly with the National Institute of Infectious Diseases. Also, in addition to the Master of Public Health, the Institute is training even higher level professionals with its three-year program leading to a Doctor of Public Health degree.

As we enter the 21st century, the birthrate continues to fall and the population profile ages even faster. Remarkable

changes are taking place in the social environment due to globalization and informatization, and as progress is made in science and technology, there is a need to ensure the quality of health care and social services. Government policies are entering into an important phase, starting with "Healthy Japan 21." Other initiatives include the "New Clinical Training System for Physicians" aimed at qualitative improvement of physicians, and ratification of the "Framework Convention on Tobacco Control." In response to the needs to the time, the Institute is constantly working on sophisticated research on new issues, and believes that its mission is to utilize the fruits of that research in training human resources. It is essential to develop New Public Health based on traditional public health technologies. Health sector reform is emerging for community health care everywhere, and there are many issues that cannot be managed without the close involvement of health care and social services. It is also necessary to place more emphasis on health system research to deal with these issues. In the methodological sense as well, it is necessary to develop balanced approaches aimed at groups and individuals, based on EBM, such as for programs to prevent lifestyle-related diseases. Another important issue in the context of New Public Health now is the quality of health services, for example reducing the number of accidents in health care. Further, issues that involve human rights, such as child abuse, abuse of the elderly and terminal care, are not limited to health care or social service. These are major issues that also involve ethical values. It is difficult to deal with the various issues raised by New Public Health through the traditional system alone. Therefore, the National Institute of Public Health believes that it is necessary for us to work together further with the government, and use innovative methods to focus on improvements and reforms.

ORGANIZATION



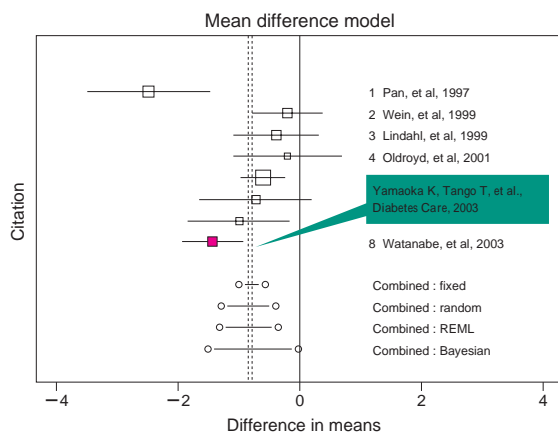
Organizational Tree of the National Institute of Public Health

DEPARTMENT OF TECHNOLOGY ASSESSMENT AND BIOSTATISTICS

This department performs the analysis of the trends in research in the fields of public health, environmental health and social welfare, conducts scientific and ethical assessment of health technology, makes integrated use of statistical information and develops statistical methods on health statistics. Specific research topics include randomized controlled trials for producing high quality evidence and statistical methodologies relating to this; statistical methodologies of meta-analysis to systematically evaluate existing research results; statistical estimations of disease mappings and tests for disease clustering; statistical methodologies relevant to solving public health problems; epidemiological studies and systematic reviews of excess environmental risk, cardiovascular disease, cancer and intractable diseases. As part of its research activities, the Department also conducts joint research with universities in the United Kingdom and the U.S.A.

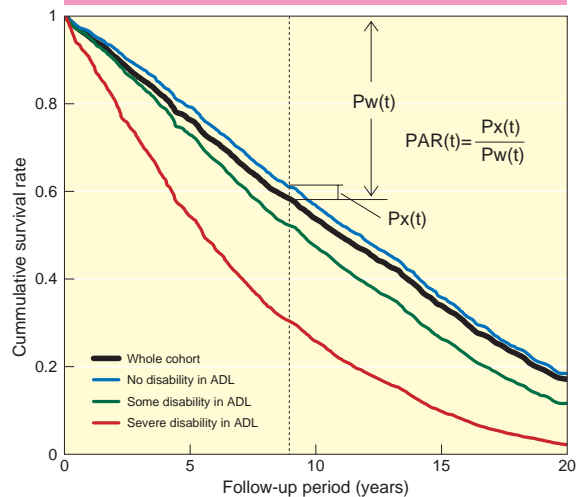
The Department also undertakes educational activities in the form of the "Biostatistics" program for the Master of Public Health (in Biostatistics) degree. It also offers short courses in specific training such as "Biostatistics for Clinicians involved in Clinical Trials" and "Distance Learning in Biostatistics".

Forest plot for the net change in 2hPG in 8 RCTs of the effects of dietary education on serum lipids.



Meta-analysis of randomized controlled trials relating to the effects of dietary improvement program for prevention of diabetes for a high-risk group.

Sex- and age-adjusted 20-year survival curves according to levels of disability in ADL in elderly cohort



Biostatistical method used for analysis of relationship between elderly baseline ADL and life expectancy using data from a 20-year cohort study.



An example of "Regions" identified as most likely cluster by FLeXScan, a software for flexible spatial scan statistic developed by the Department of Technology Assessment and Biostatistics.

This Department conducts research on the development of methodology as well as outcome to contribute to formulate government policies based on scientific evidence. (Figure 1)

The Areas of research are “information gathering,” “development of scientific grounds,” “coordination of personnel,” “resource development,” “priority setting,” “participative planning,” “tracking enforcement,” “results evaluation” and others. Specifically, the research targets have been “healthcare reform” in health systems overseas, domestic central and regional government policies; projects such as “Healthy Japan 21,” “Community Healthcare Project” and “Elderly Healthcare Services;” and “disease management for cancer, high blood pressure, diabetes, etc.” Also, the Department has been focusing on research into “safety and quality of medical care services,” which has been the national concern due to the spate of medical accidents in recent years. (Figure 2)

Further, as Japan is poised to enter the super-aging society (Figure 3), hitherto unexplored territory for the human beings, the Department has recently been tackling research, based on these research results, that contributes to “design of a healthcare system that is highly efficient, fair, and can be maintained at a high level of softy & quality.” (Figure 4)

Figure 1
New International and Domestic Trends

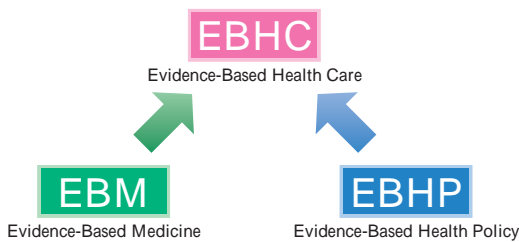


Figure 2
Steps toward Improving Safety & Quality

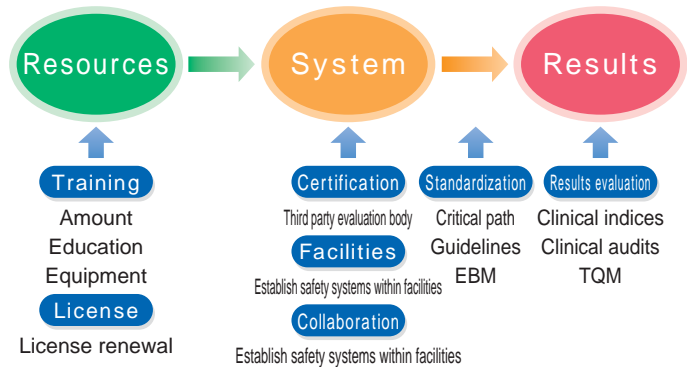


Figure 3
Targets by Generation

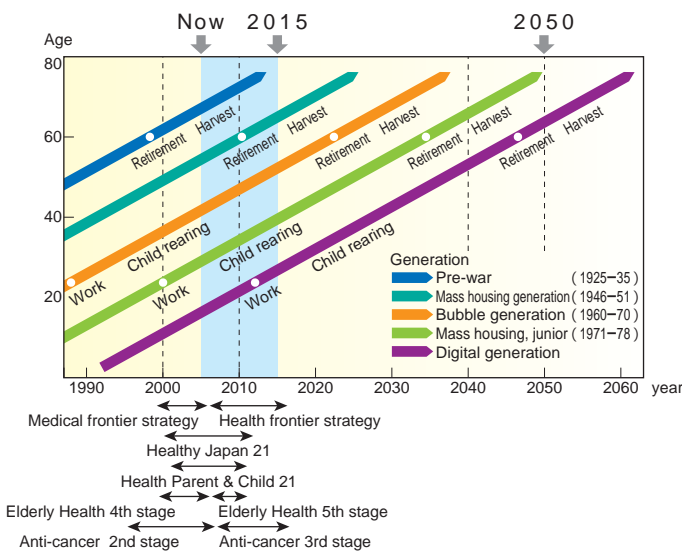
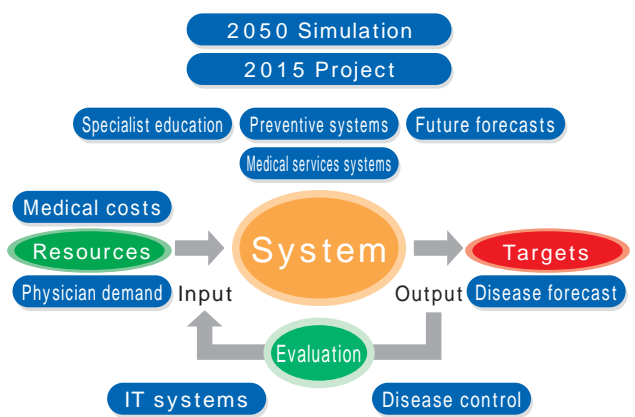


Figure 4
Overall Research Mapping

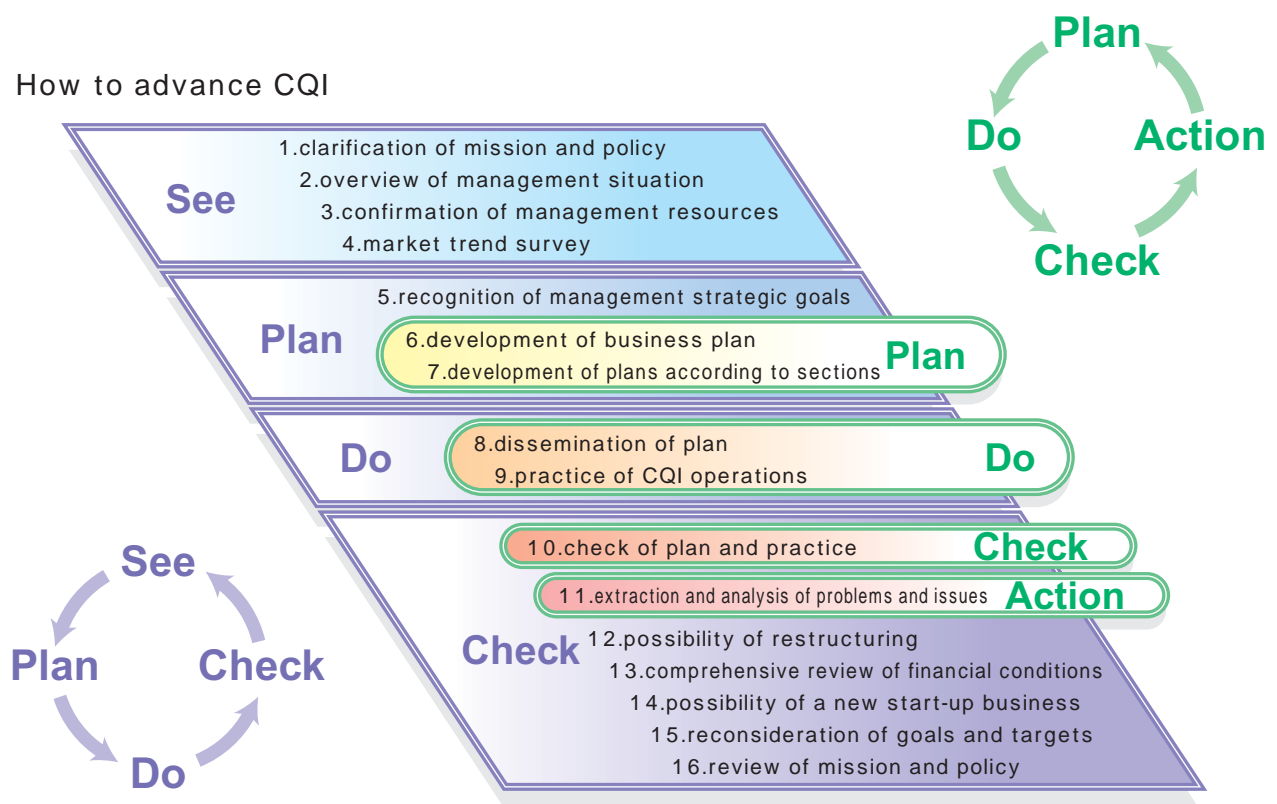


DEPARTMENT OF MANAGEMENT SCIENCES

This Department conducts research on the possibilities of application of a variety of management science methods in the medical and social services fields.

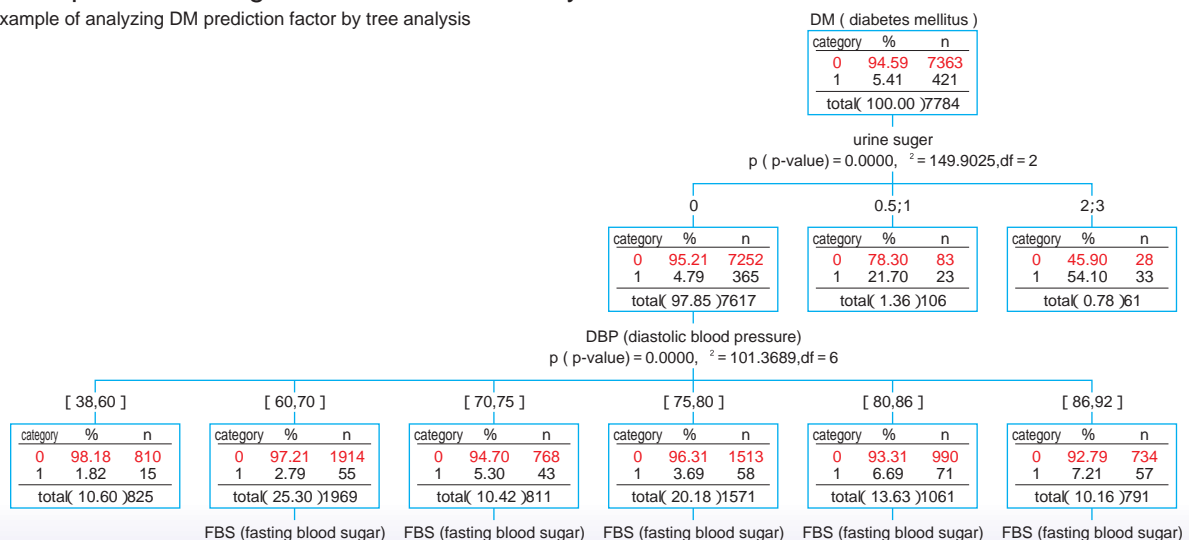
Management science is already a matter of common knowledge in industry, but its introduction to the fields of medical services and social services has lagged behind. The Department searches for possibilities to introduce management science methods in medical services and social services. It does this by carrying out international research studies and implementing a variety of simulation models to find out how the medical services and social services fields differ from ordinary businesses, how those differences affect the utilization of management science methods, what points must be considered to make introduction possible, and based on those results, what kind of achievements can be expected.

How to advance CQI



example of management science analysis of medical examination data

example of analyzing DM prediction factor by tree analysis



DEPARTMENT OF HUMAN RESOURCES DEVELOPMENT

This department promotes research and support for development of educational technology and evaluation methods for human resource development in community and international health care.

The National Institute of Public Health is the focal point for the development of professionals in community health care, and carries out training exercises and training of personnel in a wide range of local public entities. It is also expected to grasp the situation of human resource development in local public entities, and offer scientific support for effective human resource training.

The Department of Human Resources Development thus has the responsibilities of developing and educational technology for the training of human resources in the fields of domestic public health and international healthcare, and of carrying out research on educational technology for human resource development.

In order to make effective progress in human resource development, the evaluation perspective is very important, not only of short-term training effectiveness, but of mid- to long-range targets, policies, achievement rate setting and verification relating to human resource development.

Further, human resource development in the international health care field is an important issue, and the emphasis is placed on expected output in response to input, prior evaluation of outcome and actual ex-post evaluation, not only for human resource development that contributes to international health care, but for domestic training of trainees from overseas, as well. The department carries out development of and research on a wide variety of evaluation methods.



Research reports and publications of international bodies on development of human resources involved in community health care and medical services

DEPARTMENT OF PUBLIC HEALTH ADMINISTRATION AND POLICY



Public Health Administration and Policy

The Department of Public Health Administration and Policy carries out educational and research activities related to the planning, execution and evaluation of public health activities based on public health administration systems and policies, at the global, national and community levels.

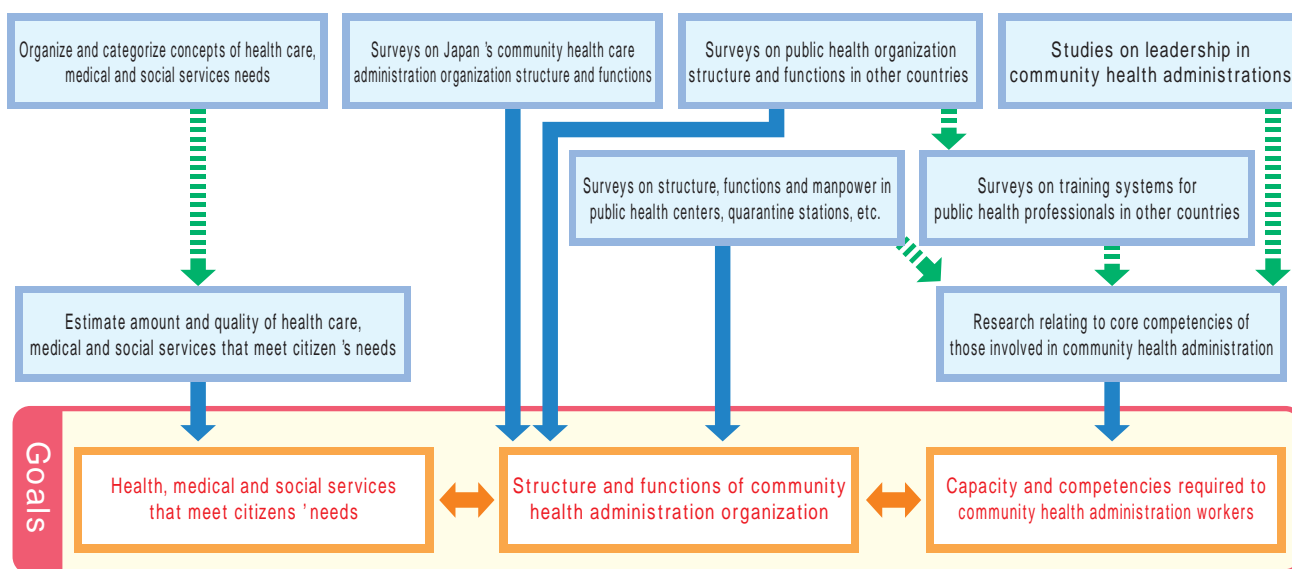
Education and Research

The department aims through its educational activities to train public health workers with vision and skills, educating them by using techniques such as lectures, case methods and debates, on the history of public health administration and the meaning of various current measures, and evidence-based decision-making methods in a variety of actual situations. The long-term program is aimed mainly at public health physicians and nurses in local government. Also, the department is in charge of the health policy development course, where the focus is on improving planning capabilities for health policies.

The department carries out research on the public health administration systems at the national and local level, and in particular public health center functions including the health risk management function. With regard to the new clinical training system for physicians that began in 2004, the department has been in charge of research related to training of supervisors and development of clinical instruction guidelines. Also, in the field of health statistics, it carries out research on improving the quality of postmortem work, aiming to improve the quality of mortality statistics, and research on the production of mortality tables by industry using inter-industry tables. Further, it is also working on issues such as economic evaluation of public health activities and evaluation of health promotion activities.

In the future, the department plans to make a visible contribution to the improvement of public health administration at the national and local level. A schema of a major department's research grant on community health administration is shown below. A part of the results was provided to a ministry's task force on community health system in 2005.

Research on the Structure, Functions and Manpower Required for Community Health Administration Organizations that Meet Citizens' Needs



Comprehensive Health Science Research Work

DEPARTMENT OF EPIDEMIOLOGY

Human health is the continuum between health and illness, and human health is evaluated along this continuum. Health status is determined by the balance between host, agent and environment. Epidemiology is the medical science that researches, in human populations, which factors have the highest probability in order to clarify the causes for imbalance among these. The epidemiological research carried out by the department covers many aspects, and in addition to domestic activities, it is also involved in international joint research and international health care and medical activities around the globe.

The department is in charge of educational activities in the form of long-term specialized courses such as "Introduction to Epidemiology," "Epidemiological Methodology," "Special Epidemiology," "Pharmacoepidemiology," "Infectious Diseases," "Behavioral Science" and "Social Survey Methods," and in the international field, offers short-term special training courses in epidemiology in the form of "AIDS Countermeasure Training" and "Countermeasures for Epidemic Outbreak of Infectious Diseases." Also, special courses are offered in "Epidemiology and Statistics," "Lifestyle Disease Countermeasures" and "Area Focused Training Course in Community Health Administration for the Republic of South Africa."

Research Themes in Progress

Development of epidemiological methodologies
Infectious diseases (food poisoning-related infections, STDs, HIV/AIDS, malaria, etc.)
Lifestyle diseases (cancer, cardiovascular disease, etc.)
Intractable diseases (population based regional cohort study on Parkinson's disease, ALS etc.)
Mental health (sleep disorders, etc.), child health (Sudden Infant Death Syndrome, etc.), mother and child health (induced abortion)
Anti-tobacco measures (support for anti-tobacco measures in schools, status of implementation of anti-tobacco measures by local governments)
Political epidemiology (mutual effects of national and local government health care measures)
Research into quality of daily life (QOL, fatigue)
Pharmacoepidemiology
Epidemiology, ethics and legislation (ethical and legal examination of epidemiological research and personal information protection)



Work in the Dept. of Epidemiology
The data obtained from surveys is input, statistical analysis is carried out. Any unclear points from the processed information are immediately discussed and dealt with among the researchers.



Work in the Dept. of Epidemiology
Discussion is added to the analysis results from studies. They examine whether or not the research results survey the overall health status of the surveyed people, and what kind of contribution can be made in terms of public health.

Examples of International Health Care and Medical Activities (JICA projects), and International Joint Research in other Countries

Morocco: Project to improve care in rural communities for pregnant and parturient women
Armenia: Reproductive health project
Kazakhstan: Survey on former Soviet Union nuclear testing and its effects on residents' health
People's Republic of China: Cohort research into cancer and cardiovascular disease
Cambodia: Intervention studies of forest laborers and regional malarial infection situations
Papua New Guinea: Ascertain and take measures for malarial infection situation among children
Vanuatu: Malaria eradication measures and evaluation

Examples of International Health Care and Medical Activities

Intake and guidance of overseas students (China, Ghana, etc.)
In charge of international training within the NIPH
Disease countermeasure support and technological support for developing countries (e.g., sending experts to JICA technical cooperation projects), international joint research



The John Snow Pub
Standing facing this corner, on the left is the former Cambridge Street (now Lexington Street), and on the right is the former Broad Street (now Broadwick Street).

In the summer of 1854, cholera broke out in the St. James parish of England's capital, London and more than 700 people died. Dr. John Snow, an anesthesiologist who used chloroform when Queen Victoria gave birth, made a distribution map of the fatalities and discovered that there were many in the area around the common well on Broad Street, and hypothesized that the cause of cholera is carried in water. The John Snow Pub, located near that spot, is the Mecca of epidemiology, and epidemiologists often visit it.

DEPARTMENT OF PUBLIC HEALTH NURSING

Education and Training

The Department offers the subjects “Public Health Nursing Methodology”, “Community organization & Case Management”, “Qualitative Research Methods”, “Quality Assurance of Community Service” etc. in the long-term course.

“Public Health Nursing Management course “ for top and middle level public health nurse managers and “Child Abuse Prevention course” are run in the short - term program.

Survey & Research

Over the past several years, we have been working on research relating to community health activity evaluation. We have developed quantitative & qualitative evaluation methods indices for public health nurse activities and training methods to improve evaluation skills. In addition, we carry out research relating to mother and child health care, elderly health care and disaster nursing. At the present, we are focusing on “areas of daily life for citizen”. As the emerging of municipality progresses, it has become more important that health care and social services are provided taking into consideration of areas of daily life especially for the vulnerable people.

Collaboration with local governments and community residents

Department staffs give lectures in training sessions, and participate in committees for healthy Japan 21 planning, community nurturing support planning etc, which are sponsored by local government. We also support for research activities by public health nurses as a supervisor.





The department addresses issues of health care and social services, from infants to adolescents and throughout life. For the improvement of health care standards, its activities focus on health care evaluation and health care advice, child-rearing, prevention of illness and accidents, and behavioral science for maintaining a healthy life. It carries out survey and research on life-long human health management from many perspectives, including nutrition and diet improvement and physical and mental health.

Infant Growth Curve (2000 survey)



The arrows showing holds up head, rolls over, sits along, stands up holding on, crawling and walks alone go from the age in months or years when about half of children are able to do these things, to the age in months or years when about 90% of children are able to do them. Put on arrow on the graph when your child is able to do these things.

Suffocation (soft bedding)



While the baby cannot lift its own heavy head, soft bedding and pillows are dangerous. Also, avoid placing stuffed animals and other toys in the cot.

Providing airway Infants (under 1 year)



If the baby is unconscious, the muscles at the back of the throat fall back and block the airway, so place the baby on its back and tip the head backward. Raise the chin at the same time, and the airway will open.

DEPARTMENT OF HEALTH AND SOCIAL SERVICES






The Department of Health and Social Service implements surveys and research in relation to the management and technological development for the medical and health care services fields and those any other kind of being related social services. The department also examines the application particularly that management and technological evaluations for the social services required in the 21st century.

Specifically, the department carries out research on the quantitative approach to personal support in the context of long-term care services and health care, medical and social services, and on assessment methods to evaluate the quality of these services. The department aims to set up evaluation indices for these above personal support services. It also run toward to develop with service management systems and assessment methods based on those indices.

Moreover, it carries out research on methods of evaluating the technology and skills of administrative officers for social welfare, and on the ideal method of carrying out organization of a local self-governing civil service employee and health care, medical and social services administrations.

In this way the Department of Health and Social Services research contributes to improvements in the management skills and technological ability of administrative officers involved in personal support services. The results of this research are used every year when training is to be implemented for administrative officers in the prefecture and city government, designated cities and core cities.

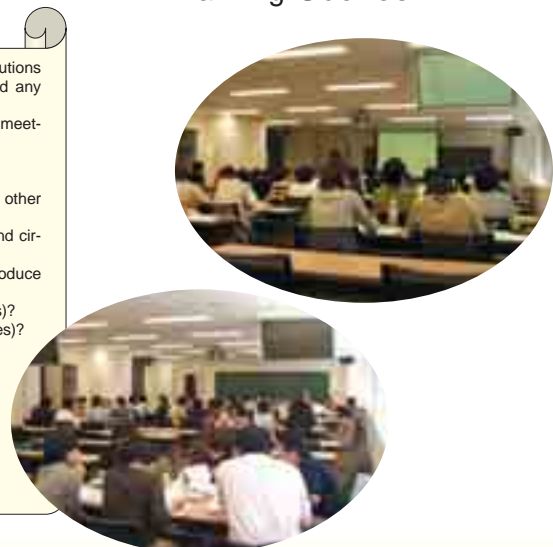
Structure of Quality Evaluation

	 Model 1 Individual Model...Individual staff member	 Model 2 Group Model...Department, multiple staff members	 Model 3 All staff members
A ; Structure	1.Enquire professional license 2.Review qualification-Career/ appropriate certificates	1.Human resource analysis and evaluation on the department level 2.Safety maintenance of devices and machineries, tools and materials being intended for social welfare 3.Safety check for the facility	1.Review establishment and installation standards 2.Review personnel assignment standards 3.Review fireproofing, disaster prevention clauses, etc
B ; Process	3.Discuss peer review 4.Evaluate activities 5.Review productivity	4.Review standards and guidelines 5.Check business operations indices (numerical) 6.Review outcome indices 7.Analyze implementation process	4.Analyze and evaluate facility utilization date 5.Review incident Investigation committee
C ; Outcome	4.Identify profile of services and activities 5.Determine a couple of items, such as improvement, supplement and amendment.	8.Accident outbreak rate 9.Analyze complications and infections rate	6.Analysis and evaluate for changes in the severity of care need, mortality rate, etc. 7.Analysis of variance evaluation for quality indicators and outcomes

Evaluation Scale of collaboration management

- Do you prepare (in writing) and propose necessary services and programs to other institutions and service staffs based on your understanding for the detail of consultation services and any other problems in the customer?
- Do you have the power to decide, on your own judgment, bearing a certain budget for the meetings, etc. in which other institutions (facilities) participate?
- When collaborations are carried out among other institutions (facilities), do you report your progress and results to those related participating institutions (facilities)?
- Do you participate a conference not only in your related professional groups, but also in any other groups without of yours.
- Do you ask practitioners in other related institutions (facilities) about business operations and circumstances at their institutions?
- When a new professional worker is assigned to your institution (facilities), do you take introduce them around to other related institutions (facilities)?
- Do you recognize what kind of a service the customer is receiving from other institutions (facilities)?
- Do you furnish data and information about your own business content to other institutions (facilities)?
- Do you obtain a certain knowledge and necessary information for providing service from other institutions (facilities)?
- Do you manage the customer information and data collecting from multiple institutions (facilities) and professional staffs?
- Does your institution (facility) participate in social gatherings with other related institutions (facilities)?
- Are you in control of what kind of a service and professionals are available in related institutions (facilities)?
- Do you encourage your colleagues to participate in your case study meetings?

Training Scenes



DEPARTMENT OF ORAL HEALTH



This department carries out evaluation of oral health and dental disease prevention technology, along with related studies and researches. The main oral functions are language and eating, and functional impairments are increasing in ageing societies.

Impairment of oral functions brings about deterioration in the quality of life (QOL), and it is important to prevent this through team approaches by many specialists. Dental diseases such as caries and periodontal disease are factors that impair oral functions, and it is necessary to ascertain correctly the condition and disease experience, and spread knowledge and technology relating to preventive methods.

Also, dental disease and oral function deterioration affect health and disorders in the body as a whole, and it has become clear that they relate also to prevention of lifestyle diseases such as diabetes, prevention of life inactivity illness, which is an issue in the ageing society, and prevention of aspiration pneumonia in the elderly under long-term care. So, the department is working on creating a social system within which everyone can receive equal oral health care and dental care social services.



Group discussion for distance learning (oral health care)



Group discussion for dental hygienist training



Saliva analysis for the risk assessment of dental diseases

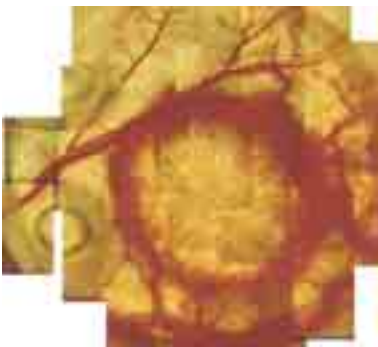


Tooth hard tissue analysis for prevention of tooth decay

DEPARTMENT OF ENVIRONMENTAL HEALTH

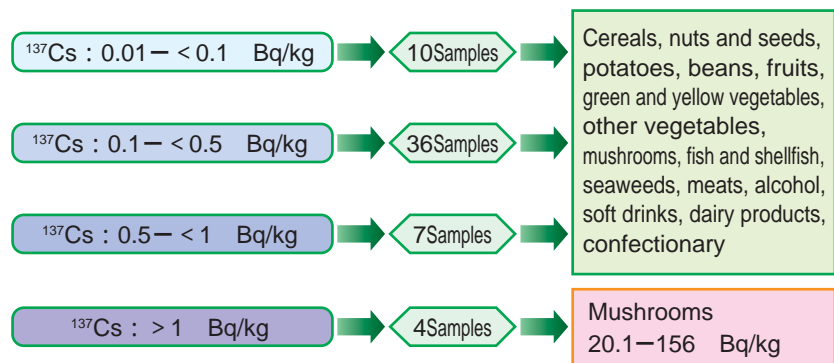
This department carries out studies and research relating to health services, safety measures and comfort for physical and chemical factors in the living environment. Specifically, it carries out research into the effects on health of physical factors such as ionizing radiation, electromagnetic waves and ultraviolet rays in the living environment and into safety measures for these physical factors. It also analyzes and evaluates the actual living environment for the purposes of correctly evaluating the amount of exposure to these physical factors and developing protection and reduction measures. Second, it implements research into the effects on health of harmful chemical substances in the living environment and their dynamics. Since many harmful chemical substances that affect the human body exist in minute amounts in the living environment, it is important to evaluate overall their formation, dynamics and genetic effects. The department also develops high sensitivity, high precision measurement methods and exposure amount evaluation methods. Thirdly, it carries out research into the biological effects of a variety of physical and chemical substances living environment on living organisms, and evaluates their potential risk. Further, based on the results of this research, the department implements research aiming more actively at improving the comfort of the living environment and lifestyle.

Microscopic photograph of breast cancer tissue



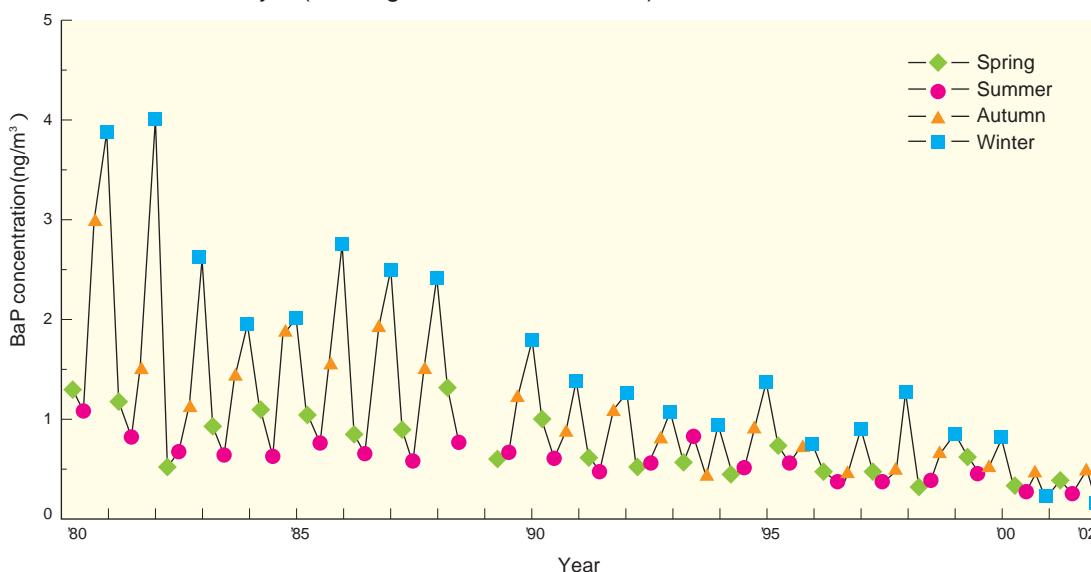
Checking the effects of electromagnetic exposure on breast cancer growth and blood circulation in order to evaluate the safety of electromagnetism.

Radiation levels of food products imported from overseas (total 147 samples from 34 countries of origin)



The ^{137}Cs concentration in imported food products is at the same level as domestically produced and distributed food products, with no differences among countries of origin and no noticeable pollution. However, a specific high trend was seen for mushrooms. The Ministry of Health, Labor and Welfare has set the provisional limit value for radiation testing (limited to European production) for imported food products at 370Bq/kg of ^{134}Cs + ^{137}Cs .

Long-term seasonal changes in BaP concentration in atmospheric dust sampled in central Tokyo (Shiroganedai, Minato-ku)



The department has measured the concentration of a typical carcinogenic in the living environment, benzo(a)pyrene, in the air for more than a quarter of a century.

DEPARTMENT OF ARCHITECTURAL HYGIENE AND HOUSING

The department carries out public health-oriented research into the health effects of housing and countermeasures from the point of view of the inhabitants, so that homes and office buildings will be more hygienic and healthy to live and work in. In particular, an important research topic is improvements in housing for those easily affected by their living environment, such as the elderly, the handicapped, infants, and pregnant women.

Recently, the "sick house syndrome" has become a matter of social concern. The department is working on ascertaining the actual situation, cooperating with the Ministry of Health, Labor and Welfare on the production of guidelines values, and starting up a database system for room temperature information. Also, it does research into the environment of buildings other than homes such as office buildings and schools, where large numbers of people congregate, and the health problems encountered by those people. The department is concentrating on research that leads to accurate control of physical environment factors in artificial environments inside buildings, such as room temperature and humidity, air quality, noise and others, and prevents environmental degradation.



Experiencing home care environment in the ADL (activities of daily living) room



Analyzer for chemical compounds in indoor air



Measuring chemical compounds and airborne microorganisms in a home



Measuring aerosol in an office building

DEPARTMENT OF WATER SUPPLY ENGINEERING

The Department of Water Supply Engineering is the only governmental body that carries out research and training relating to water supply.

The department does research on water supply planning in accordance with changes in the social situation; emergency management measures in preparation for drought, earthquake and accidental water contamination; health risk assessment and management of drinking water contamination by chemicals and microorganisms; protection of drinking water sources; new water treatment technologies; comprehensive water quality management from source to service equipment and others. The result of such researches contributes to the establishment of standards and technical guidelines in the national water supply administration.

The department is working on improving water supply and hygiene in developing countries as a WHO Collaborating Center for Community Water Supply and Sanitation, and it also contributes to the activities of the WSSCC (Water Supply and Sanitation Collaborative Council) Operation and Maintenance Network Group.



Research on analysis and health risk assessment of trace chemical substances in drinking water



In addition to lectures and exercises the special course in water supply engineering takes participants into the field



Practical training course aimed at test skill development for a pathogenic microorganism, *Cryptosporidium*



An experimental water treatment plant is used to carry out researches on contaminant removal technologies

DEPARTMENT OF FACILITY SCIENCES



The department is involved in researches relating to architecture and equipments in the fields of medical and social services for a variety of facilities, from hospitals and clinics to facilities for the elderly.

Specifically, it creates evaluation standards for the appropriate planning of architecture and equipments of medical and social services facilities, and provides information in the form of the "Facility Environment Evaluation Checklist." Second, with regard to management and operations methods for medical and social services facilities, it carries out researches from the perspective of facility management, such as on the problems of hospital control of medical waste, in-hospital infection and medical accidents.

Along the lines of these research themes, researches are done on outpatient treatment departments in acute treatment facilities; facility environment in mental health treatment facilities, and facility environment in elderly care facilities.



Hospital management training in facility environment evaluation laboratory



Workshop involving many services



Some research results are published on the web



The Department of Facility Sciences is a designated WHO Collaboration Center, with active engineering cooperation and international training

DEPARTMENT OF EDUCATION AND TRAINING TECHNOLOGY DEVELOPMENT

The Department of Education and Training Technology Development is expected to fulfill the function of examining the state of training in the Institute as a whole. For that purpose, it collaborates with many bodies outside the Institute, such as front line public health centers, and carries out research to ascertain requirements for providing training with high quality, and reflect the results in planning. Specifically, this means research aimed at improving education and training technology at the national level for those involved in public health and social services. Also, with regard to the international cooperation activities carried out mainly by the Office of International Cooperation, the department collaborates with many related organizations as it carries out international cooperative research aimed at responding to global needs and trend of the time. In light of the fact that the department is in charge of overall training at the national level, it maintains close collaboration with the Ministry of Health, Labor and Welfare and makes every effort to provide high quality training.

Training course on International health



CENTER FOR INFORMATION RESEARCH AND LIBRARY

In order to develop Japan's healthcare, medical and social services in the 21st century, it is essential to build an information infrastructure that establishes and uses scientific evidence for policy planning, execution and evaluation. The Center, taking a role as a library, carries out research relating to scientific data gathering, evaluation and provision, and also carries out information-related education for researchers and personnel.

Training and research functions: The Center carries out training and research relating to information evaluation, information design, information searching and statistical processing.

Library and electronic library function: The library is recognized as a WHO Reference Library, with about 85,000 volumes and about 4,000 periodicals. It edits and publishes the Institute's journal, "Health Care and Medical Science," and has digitized classical texts on public health and research results based on Ministry of Health, Labor and Welfare scientific research grants for viewing on its website.

Policy support function: The Center manages and operates a website for support of the health and labor administration. It has a health risk management support information system, epidemiological ethics guidelines and more.

Organization

Section of Knowledge Evaluation

Section of Information Design

Office of Library Services

Section of Tobacco Policy Information Room (new in 2005)



DIRECTOR FOR PLANNING AND COORDINATION

The Director handles overall coordination among the various research departments, coordinates communications about research with administrative bodies and coordinates project research with other research bodies. In addition, the Director evaluates the correlation between these research results and training exercises and comprehensively coordinates the diverse research and training functions of the Institute.

DEPARTMENT OF GENERAL AFFAIRS

This department handles personnel and wages, budget and accounting along with administrative affairs relating to training.

General Affairs Section

Personnel, wages and benefits, survey research administration and other administrative matters.

Accounting Section

Income and expenditure budgeting, balancing and settlement, procurement and control of national assets.

Education Section

Administration for education and training.

Monument in front of Main Entrance



Title: Circulation and Purification
Creator: Yoshio Shirakawa
Material: Corten steel

Mr. Shirakawa's work using steel is created through a combination of fundamental shapes - circles and spheres - found in nature. It makes a forceful, honest and warm impression on the viewer, and expresses well the image of the Institute's theme, which is "circulation and purification."

With the passage of time, the corduroy steel changes color as if assimilating itself into the surrounding nature, and against the background of two elements, the hard image of the main building and the rich green plantings, it sets off the concepts of both and links nature and the building together.

National Institute of Public Health Logo



The image is of a blood cell or seed, and forms the "H" of health and represents the opening of the flower of life.

ACCESS MAP

Address: Minami 2-chome 3-6, Wako-shi, Saitama 351-0197

TEL: +81-48-458-6111 (main number)

Each department also has a direct dial number.

FAX: +81-48-469-1573

National Institute of Public Health website : <http://www.niph.go.jp>

Access:

25-minute walk from Wako-shi station on Tobu Tojo line and Tokyo metro Yurakucho line

30-minute walk from Hikarigaoka station on Toei subway Oedo line

The Dormitory (in the same ground of NIPH)

Lodging (no meals)

¥2,700 / night

w / private bath / shower & bathroom

The rate discounts are available depending on the length of stay.





National Institute of Public Health



Tobacco Free * NIPH



The National Institute of Public Health is promoting a "Tobacco Free Society"