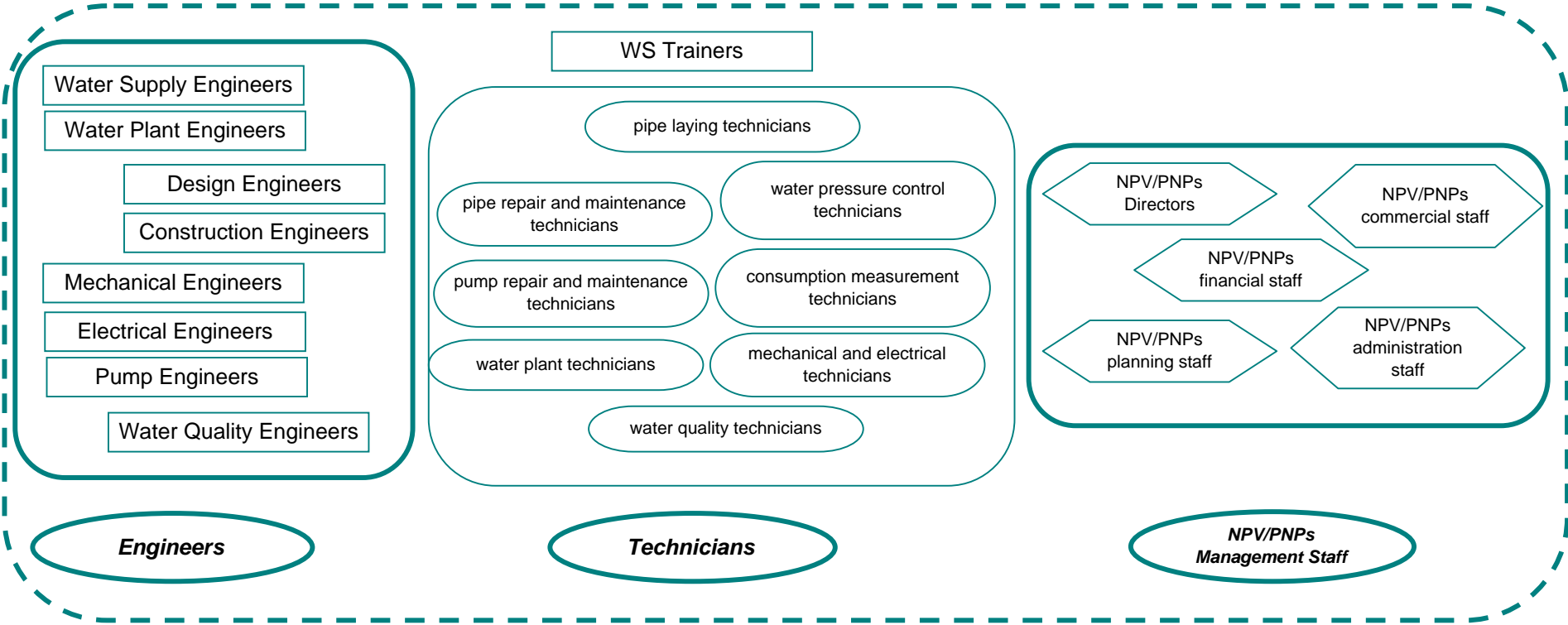
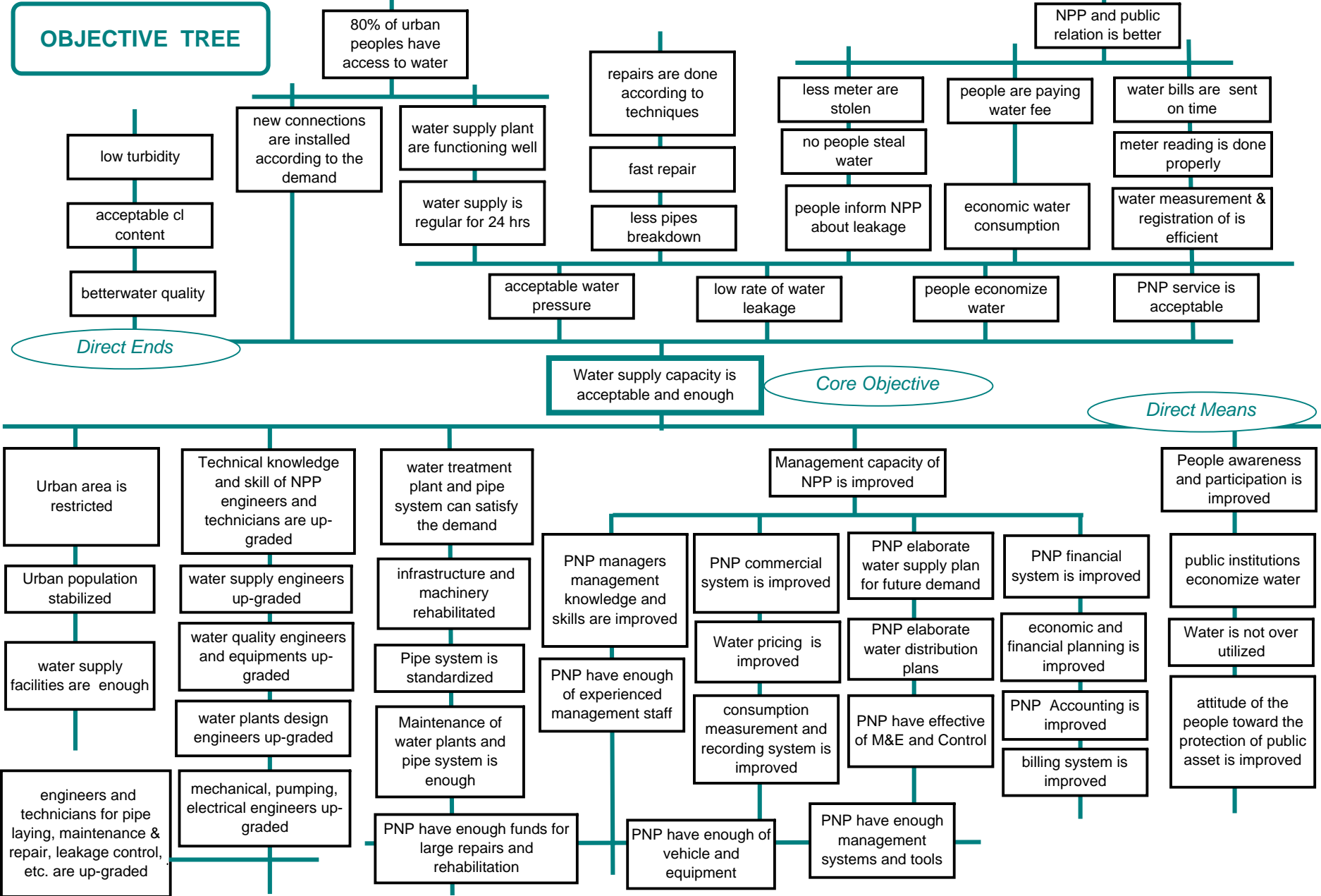
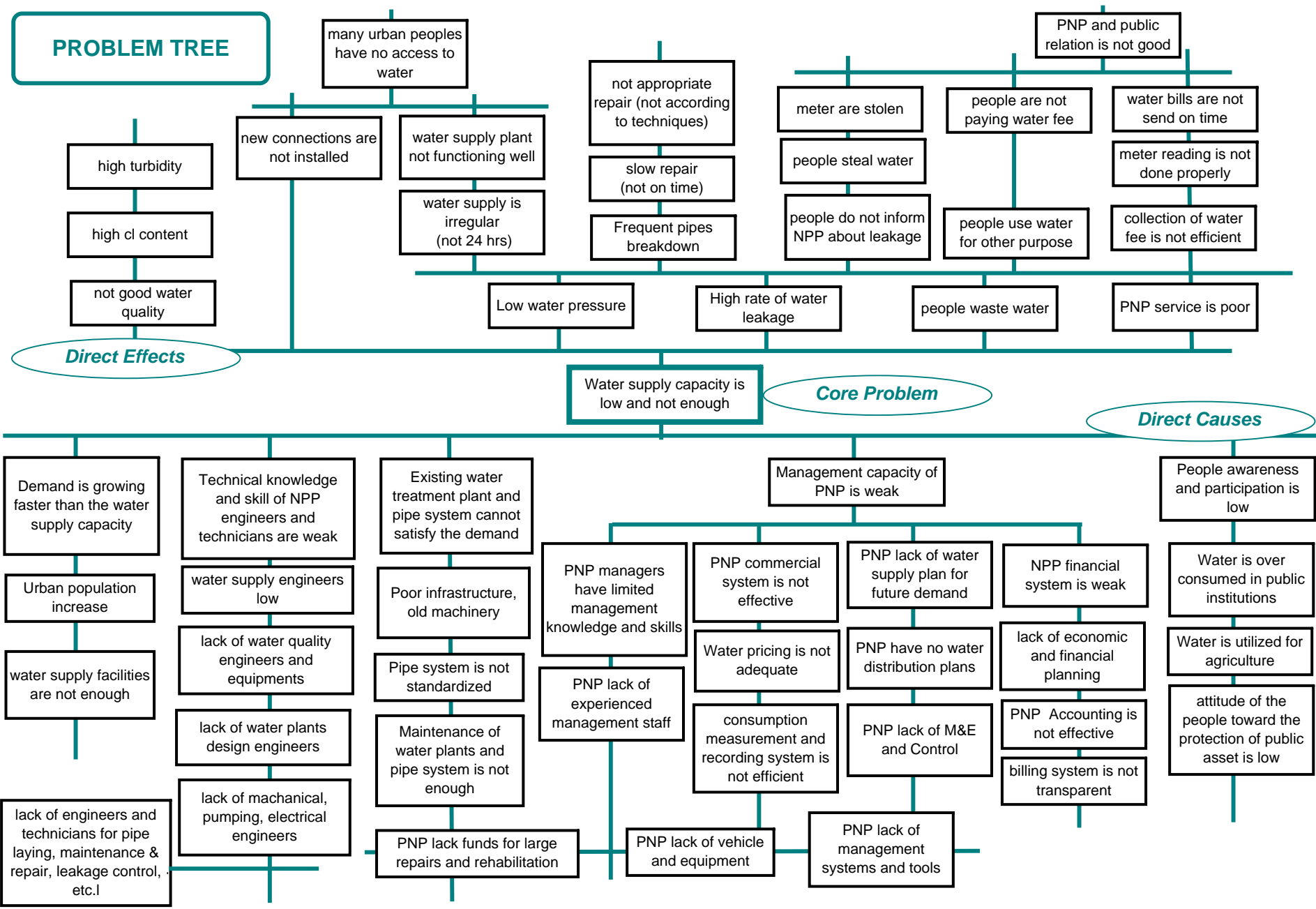


TARGET GROUPS



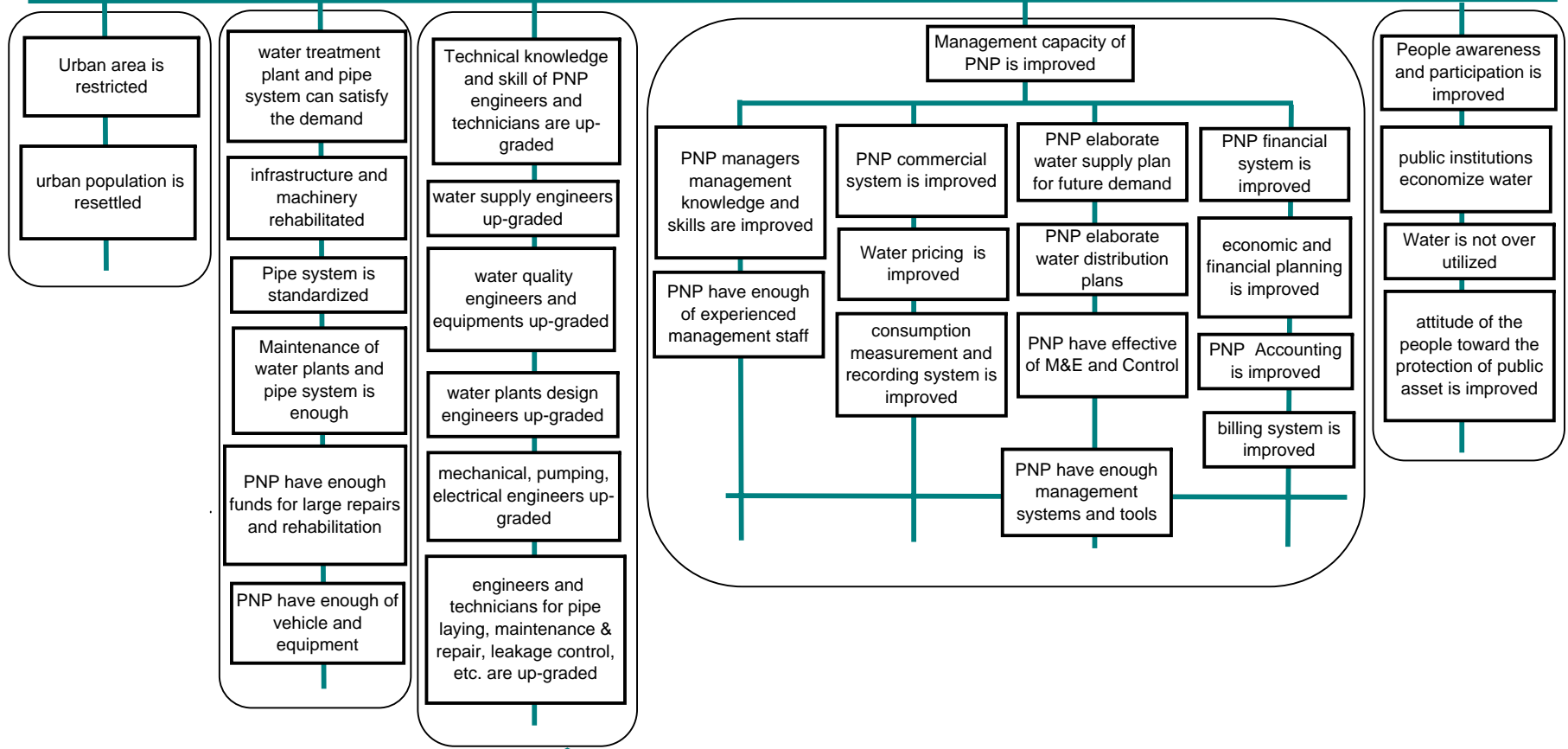
OBJECTIVE TREE





APPROACHES

Water supply capacity is acceptable and enough



**(5)
Demography
Approach**
Score: 1-0; 2-0; 3-0

**(4)
Infrastruture
Development
Approach**
Score: 1-0; 2-1; 3-9

**(3)
Technical Knowledge
and Skill Up-Grading
Approach**
Score: 1-5; 2-4; 3-1

**(2)
Management
Improvement
Approach**
Score: 1-5; 2-5; 3-0

**(1)
People Awareness
Improvement
Approach**
Score: 1-0; 2-0; 3-0