



# National Institute of Public Health

Human resource development and research to improve public health  
—Aiming for a healthy and safe society—



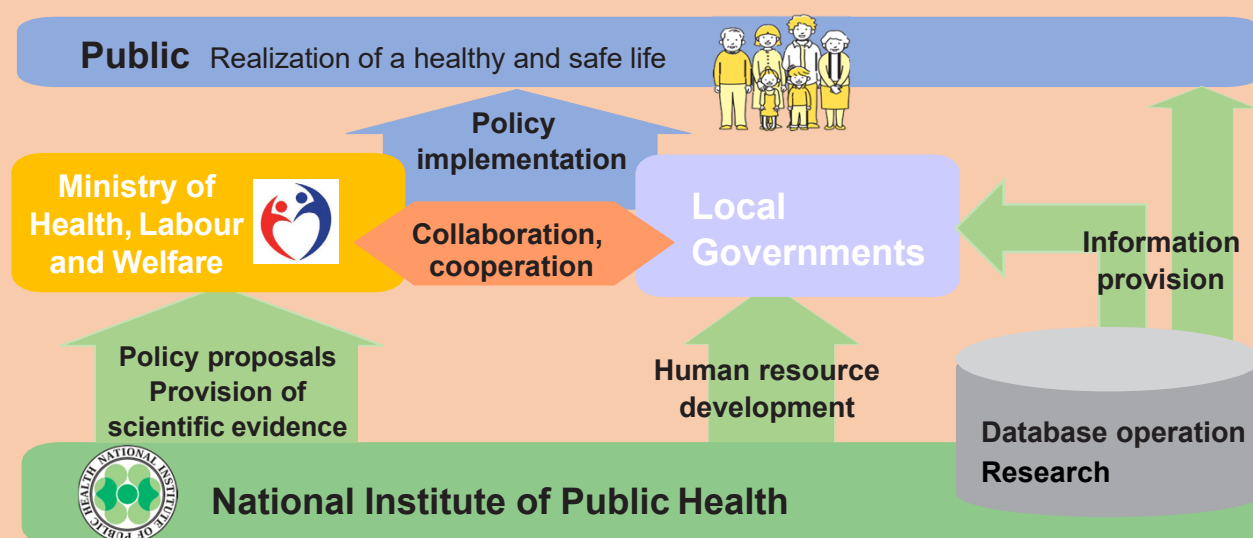
National Institute of Public Health (NIPH) , Japan  
<https://www.niph.go.jp/en/index/>



## Mission of NIPH

With significant changes in the global environment, and remarkable advances made in science and information technology, life in Japan today has become much more complex and diverse. Against this backdrop, the declining birthrate and rapidly aging population, coupled with the reform of the social security system, which includes pensions, healthcare, and nursing care, demand proactive measures to tackle the various issues concerning national life and health.

The mission of NIPH is to contribute to the improvement of public health in Japan. NIPH fulfills this role by providing training for staff at local governments and other organizations, implementing related surveys and research to promote administrative health, labor and welfare policies concerning public health, healthcare, welfare, and the living environment.



## History of NIPH

As part of a reorganization and prioritization of national research institutes conducted by the then Ministry of Health and Welfare, now the Ministry of Health, Labour and Welfare (MHLW), NIPH was established as a new body in Wako City, Saitama Prefecture, in April 2002 through the merger of many organizations and functions of the former Institute of Public Health and the former National Institute of Health Services Management and the Department of Oral Science of the National Institute of Infectious Diseases (excluding the oral infectious disease function). Furthermore, to complete the move, a new building including laboratories and an auditorium was opened in October 2004.

Initially NIPH's research framework consisted of 15 research departments and one center. In April 2011, the changing needs of the times led to a reorganization of NIPH into nine research managing directors, six research departments, and one center. In April 2018, Center for Outcomes Research and Economic Evaluation for Health was established. In April 2026, Center for Public Health Resilience was established. Currently, the organization consists of four research managing directors, six research departments, and three centers.

### The former National Institute of Health Services Management

The National Institute of Health Services Management was established in 1949 within the First Tokyo National Hospital as a Hospital Management Training Institute with the aim of modernizing Japan's hospital management and operations.

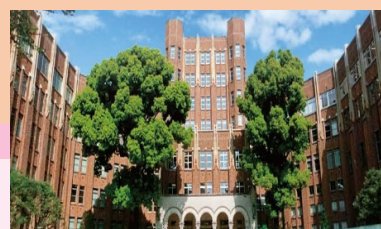
In 1961, it was reorganized as the Hospital Management Research Institute.

In 1990, it was again reorganized as the National Institute of Health Services Management



### The former Institute of Public Health

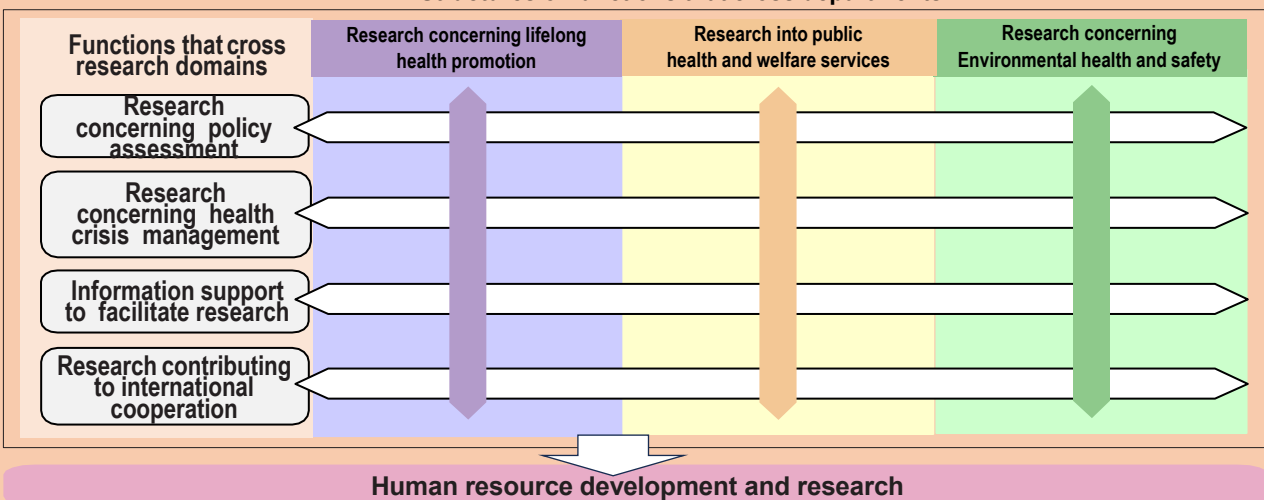
The Institute of Public Health was established in Shirokanedai in Minato-ku, Tokyo, in 1938 to train public health technicians and conduct research relating to public health. It received financial assistance from the US Rockefeller Foundation.



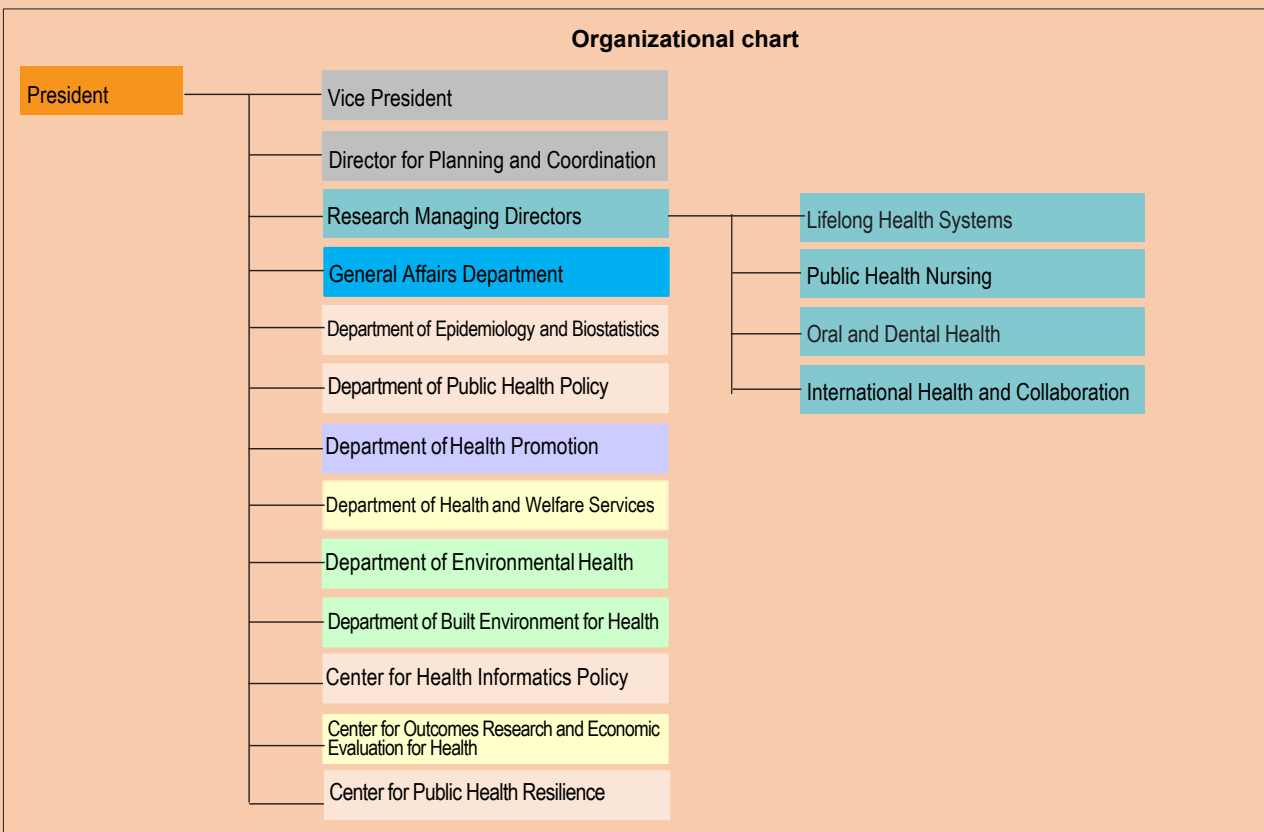
# Organization of NIPH

The public health and welfare research that NIPH tackles can be broadly classified into the three research fields: 1) lifelong health promotion (Department of Health Promotion), 2) public health and welfare services (Department of Health and Welfare Services, and Center for Outcomes Research and Economic Evaluation for Health), and 3) the living environment and safety (Department of Environmental Health, and Department of Built Environment for Health). In addition, the following departments have been established: 1) research concerning policy assessment (Department of Epidemiology and Biostatistics, and Department of Public Health Policy), 2) research concerning health crisis management (Center for Public Health Resilience), 3) information support to facilitate research (Center for Health Informatics Policy), 4) research contributing to international cooperation (Research Managing Directors (International Health and Collaboration), as the functions that traverse and are beyond the scope of the above three fields. And the research managing director positions conduct specialist training and research across each department (Lifelong Health Systems, Public Health Nursing, Oral and Dental Health).

**Structures of functions that cross departments**



**Organizational chart**



# Human Resource Development Program

Research managing directors, research departments and centers work together to provide employees engaged in services relating to healthcare, environmental health and related social welfare services (healthcare services etc.) at local governments and other organizations (doctors, dentists, pharmacists, veterinary surgeons, public health nurses, nutritionists, radiological technicians, laboratory technicians, and social welfare staff) and people intending to engage in such services with training in the basic philosophies of healthcare services etc., basic and specialized knowledge and skills, and the latest information. Training is comprised of an advanced research course, public health expert courses, short-term courses, and international courses.



## 1. Advanced Research Course

The advanced research course is designed to train people with advanced practical research skills capable of taking the lead in independently searching for and developing optimum methods for solving the various problems on the front lines of public health.

Capacity: 5 Period: 3 years

## 2. Public Health Expert Courses

The public health expert courses are designed to train and foster people capable of acquiring a broad vision and knowledge of public health and playing a leadership role as experts in solving the various problems on the front lines of public health using existing evidence.

Health and welfare services administration and others.

Capacity: 45 Period: 2 months – 3 years

## 3. Short-term Courses

The short-term courses provide people engaged in public health, healthcare, welfare, etc., with the latest knowledge and skills relating to specific themes.

Capacity: About 1,700 Period: 2 days – 5 weeks

## 4. International Courses

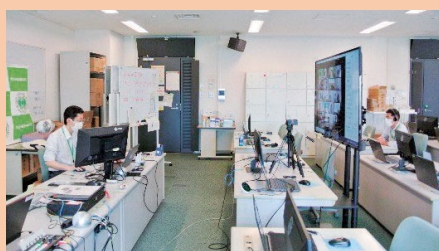
Conducted in collaboration with the World Health Organization (WHO), JICA and others, the international courses provide mainly senior officials in leadership positions who are engaged in healthcare services, etc., in developing countries with necessary knowledge and skills through discussions.

2 courses

- Health Policy Development and System Management for UHC (Leadership and Governance)
- Strengthening Social Health Protection Towards Universal Health Coverage

Period: 2 weeks

## Training implementation format



Previously, training was conducted only in a group format, but in 2020, we started online training and now we are conducting it in a way that takes into account the characteristics of each training, the merits of the implementation method, the characteristics of the target audience, and the convenience of formats such as online, mixed type that combines group and online, and hybrid type study that combines group and online at the same time.

In addition, we are using the distance learning system to further enhance training by providing pre-learning materials for training, answering questions, and exchanging information.

## Research

NIPH researchers cooperate with each other in cross-sectional research aimed at improving training, making recommendations for Ministry of Health, Labour and Welfare policies, providing scientific evidence for the drafting of policies, and providing scientific evaluation of policies for nursing care demand proactive measures to tackle the various issues concerning national life and health.

### Promotion of lifelong health

NIPH supports health-promotion measures covering such areas as maternal and child health, life-style-related diseases, smoking, dementia, and dental health with the aim of vitalizing local communities by extending healthy life expectancy.

### Improvement of healthcare quality and safety

NIPH supports healthcare policies from a patient perspective with the aim of providing safe, reliable, and efficient services at healthcare facilities.

### Promotion of healthcare and nursing care collaboration

NIPH supports the formulation of prefectural plans, regional healthcare initiatives, and nursing care insurance (support) plans with the aim of building efficient and quality healthcare systems and community-based integrated care systems.

### Promotion of economic assessment of public health projects

NIPH supports the evaluation of the effects of specific medical examinations and health guidance, with the aim of promoting the optimization of healthcare spending to flexibly respond to Japan's aging population.

### Improvement of the living environment

NIPH supports measures to address the causes of various health hazards in the living environment (building environment, radio waves, microorganisms, etc.) with the aim of improving the quality of the living environment.

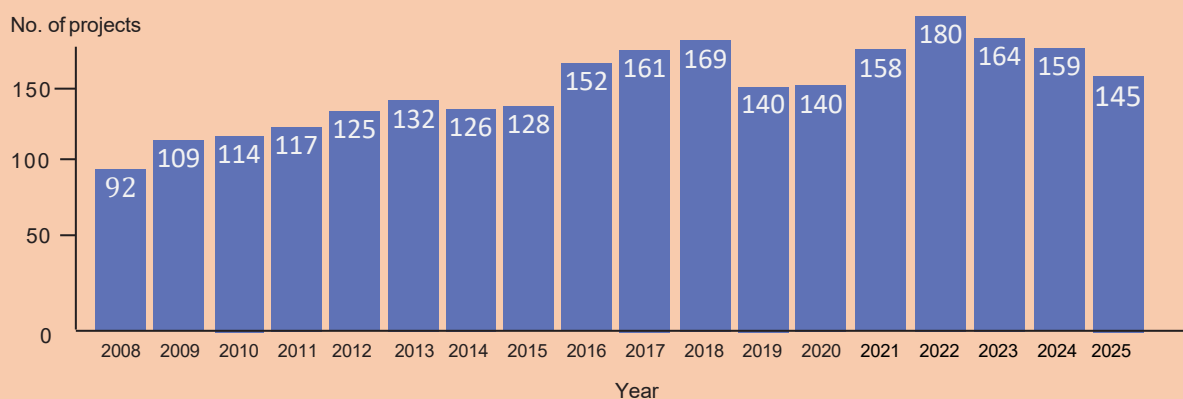
### Promotion of health crisis management

NIPH supports the drafting of policies and the collection and provision of information concerning phenomena that cause health crises (natural disasters such as earthquakes, wind and flood damage, infectious diseases, radiation, etc.) with the aim of promoting appropriate measures to address future threats to public health and try to avoid, or as much as possible reduce, potential health crises.

## Changes in the number of research themes (competitive research funding)

NIPH strives to secure priority funding and basic funding from General Accounts, and competitive research funding from such research grants as the health, labor and sciences research grant, and the Ministry of Education, Culture, Sports, Science and Technology scientific research grant.

The graph on the right shows changes in the number of NIPH research themes through competitive funding.



# International Cooperation

International cooperation in public health is critical, and NIPH actively implements training and contributes to the formulation of international policies in cooperation with the WHO, Organization for Economic Cooperation and Development (OECD), and Japan International Cooperation Agency (JICA). Two special fields are registered as WHO Collaborating Centres, and through these centers, NIPH promotes research in healthcare services, etc., in collaboration with WHO Headquarters, WHO Western Pacific Regional Office, and others. Moreover, at the request of various countries, NIPH has concluded research agreements (MOUs), sponsors trainee and researcher exchanges, and holds research conferences and symposiums on nursing care to demand proactive measures to tackle the various issues concerning national life and health.



WHO Collaborating Centres	Year of Designation	Content
WHO Collaborating Centre for Integrated People-Centred Service Delivery Department of Public Health Policy	1986	Conducts collaborative research with WHO Western Pacific Regional Office concerning systems for the provision of public health and healthcare services.
WHO Collaborating Centre on Tobacco Testing and Research Department of Environmental Health (Public Health and Environmental Management)	2014	Develop methods of analyzing tobacco products.

# Facilities



Lecture room



Information and statistics analysis room



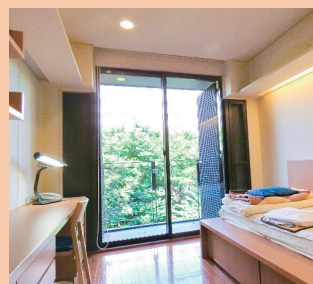
Library



Dormitory



Common space



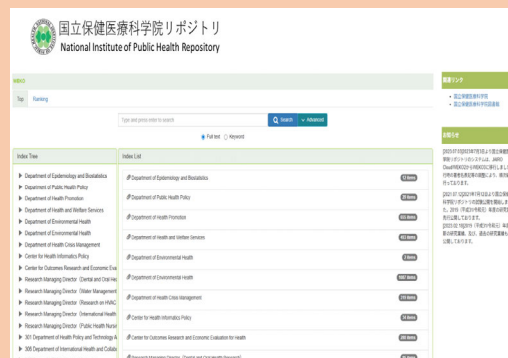
Guest room(private room)



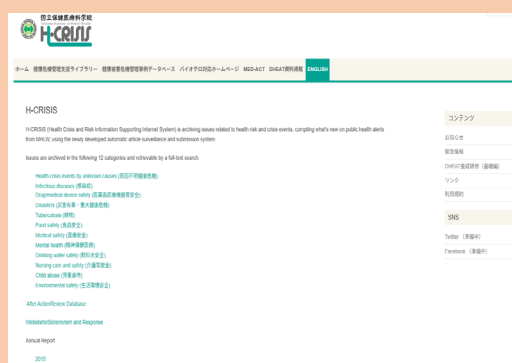
# Information provided by NIPH



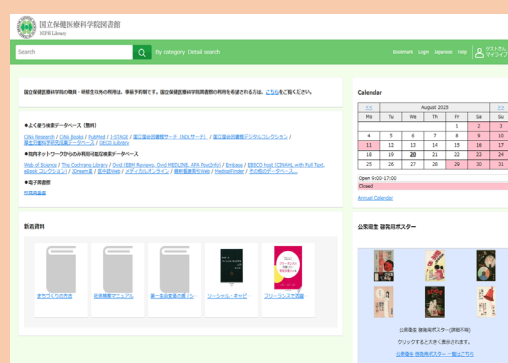
**MHLW GRANTS SYSTEM (In Japanese)**  
<https://mhlw-grants.niph.go.jp/>



**National Institute of Public Health Repository**  
<https://niph.repo.nii.ac.jp/>



**H-CRISIS (Health Crisis and Risk Information Supporting Internet System)**  
<https://h-crisis.niph.go.jp/english-top/>

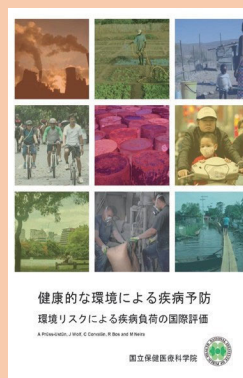


**NIPH Library**  
<https://webopac.niph.go.jp/drupal/en/>



## Journal of the National Institute of Public Health

- Published 5 times a year + extra issues
- Now available on the web



## Publications such as translations of WHO Reports

## NIPH logo



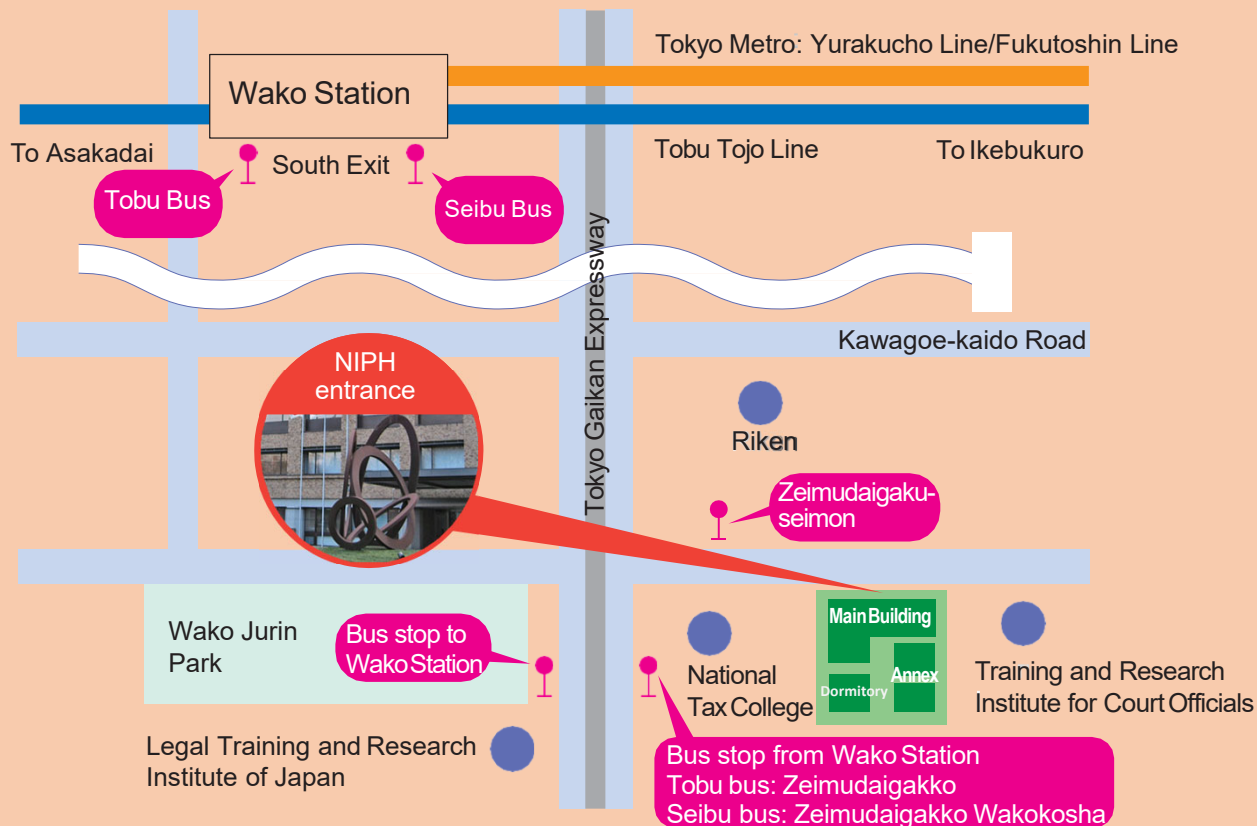
This design, forming "H" for health using elements suggesting blood cells or seeds, is a symbolic Representation of blooming life.



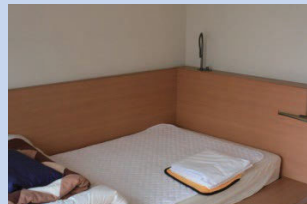
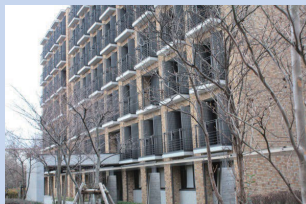
## Entrance monument title: Junkan to Jōka [Circulation and Purification]

This work in iron by the sculptor Yoshio Shirakawa combines the primordial shapes of nature—circles and spheres—to convey a feeling of strength, simplicity, and warmth.

# Map of government buildings and dormitory



Dormitory for  
course participants



## Address

2-3-6 Minami, Wako City, Saitama JAPAN 351-0197  
Tel: +81-48-458-6111 (Main number) Fax: +81-48-469-1573

Course-related enquiries:

## Course Administration Section

Tel: +81-48-458-6187 Fax: +81-48-458-6112

## Transport

### Train

- Tobu Tojo Line / Tokyo Metro (Yurakucho Line/Fukutoshin Line)
- About 25 minutes' walk from Wako station

### Bus

- Take Tobu Bus (和01) (about 10 minutes), and get off at Zeimudaigakko Bus Stop (5 minutes' walk)
- Take Tobu Bus (和06) or (和08) (about 10 minutes), and get off at Zeimudaigakuseimon Bus Stop (3 minutes' walk)
- Take Seibu Bus (泉39) (about 10 minutes), and get off at Zeimudaigakko Wakokosha Bus Stop (5 minutes' walk)

National Institute of Public Health homepage  
<https://www.niph.go.jp/en/index/>



(May. 2026)