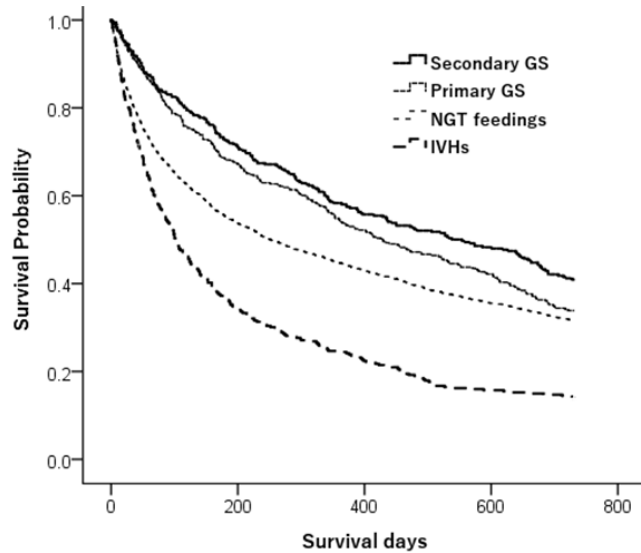


Medical and Nursing Care Service Research for extending healthy life expectancy

Akahane, Manabu (Dept of Health and Welfare Service), Imamura, Tomoaki (Nara Medical University)

My current research theme is about medical and nursing care issues, especially for extending healthy life expectancy. We are working to identify factors related to healthy life expectancy by analyzing the data which combines medical claims and care receipts.

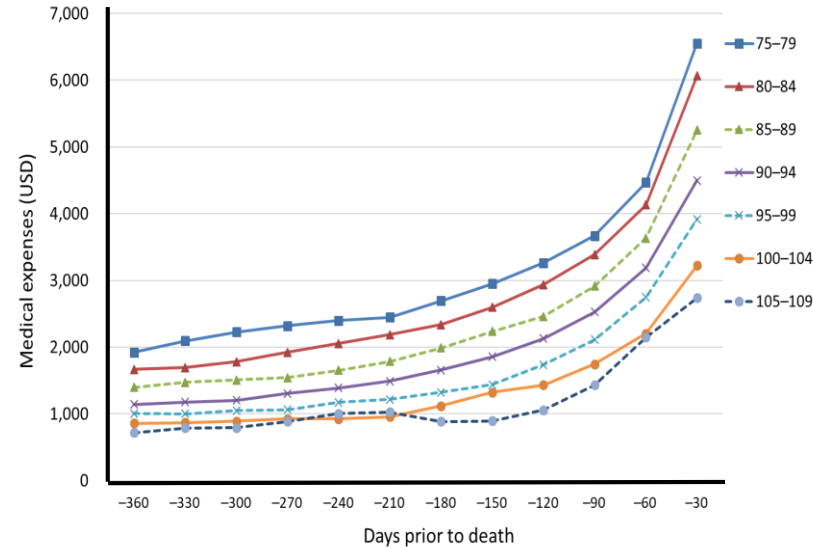
Research for Gastrostomies



Kaplan-Meier curves of survivals until 730 days after the initiations of secondary Gastrostomies (GS), primary GS, nasogastric tube (NGT) feedings and IVHs.

ref: Tsugihashi, Y. et al., under review

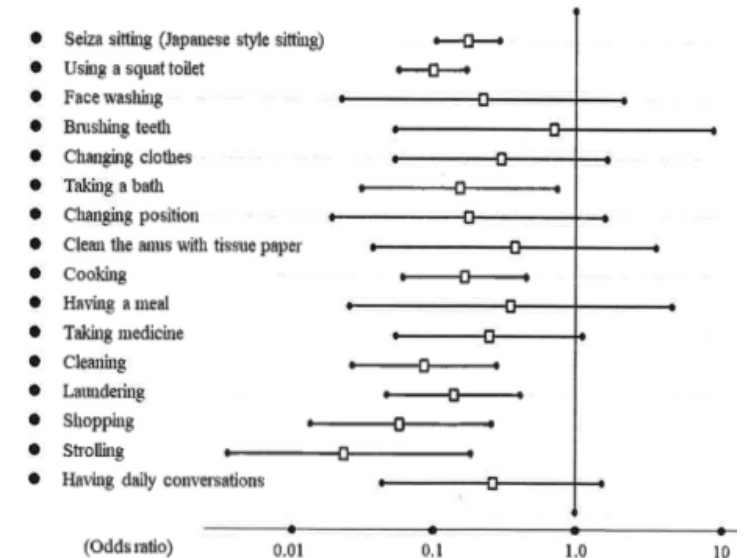
Research for Centenarians



Centenarians and semi-supercentenarians tended to have lower average medical expenses per patient compared with patients aged 99 years and under.

ref: Nakanishi, Y. et al., Supercentenarian Seminar 2019

Research for Locomotive Syndrome



Our research showed highly relationship between the presence of locomotive syndrome and difficulty in daily life such as cleaning, washing, shopping, etc.

ref: Akahane, M. et al., Mod Rheumatol. 2019