

F
7

自明治十四年七月創業至明治卅一年十二月末日

死亡統計表

東京市麹町區八重洲町壹丁目壹番地

明治生命保險株式會社本店

MORTALITY EXPERIENCE

OF THE

MEIJI LIFE ASSURANCE COMPANY LTD.,

1881 TO 1898.

HEAD OFFICE ; No. 1. Yayesucho 1., Kojimachiku, Tokio.

F
7

自明治十四年七月創業至明治卅一年十二月末日

死亡統計表

東京市麴町區八重洲町壹丁目壹番地

明治生命保險株式會社本店

MORTALITY EXPERIENCE

OF THE

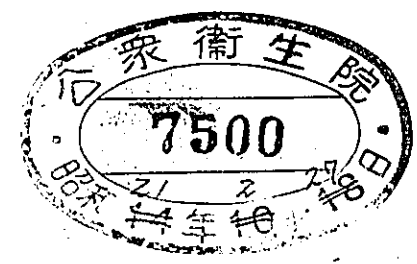
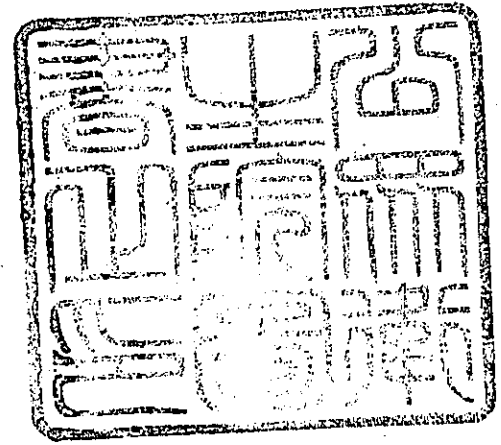
MEIJI LIFE ASSURANCE COMPANY LTD.,

1881 TO 1898.

HEAD OFFICE; No. 1. Yayasucho 1., Kojimachiku, Tokio.

昭和二年七月廿九日
川上理一先生
寄贈
厚生省研究所

F
7



一
テ病名ヲ附シタルモノ無キヲ以テ或ハ病名ノ正確ヲ缺キタル
正ヲ加ヘタルモノ尠ナシトセス只憾ラクハ解剖ノ結果ニ因リ
集シ更ニ病名經過死亡年月日年齢職業等ニ至ルマテ精密ニ訂
開業以來ノ全死亡者申込書診査報狀死去證書等ヨリ洽ネク蒐
多少ノ誤謬アリタルヲ以テ本書ヲ編スルニ臨ミ其材料ヲ會社
月九日ヨリ同三十年十二月末日ニ至ル死亡諸表ノ如キハ尙ホ
リ然リト雖モ曩キニ編纂セシ會社創業ノ時即チ明治十四年七
訂正ス可キハ之ヲ訂正シテ其正鵠ヲ失ハサランコトヲ期シタ
名經過等ニ明瞭ナラサルモノアレハ直チニ之ヲ主治醫ニ質シ
醫事統計ノ調査ニ著手シ夫ノ新タニ報告シ來レル死亡者ノ病
保險醫學上ノ事項ヲ掌理スルトナリシガ同年後半季ニ臻リ
余ハ去ル明治二十九年始テ本社ノ保險主務醫長ニ推サレ專ラ
自序

ニヨリ區分シテ調製シタル他ノ諸表トハ其數ヲ異ニセリ

リ編成シ其後ニ到達シタルモノハ皆之ヲ翌年ノ分ニ算入スルヲ以テ全然曆年

一第三表 及ヒ第四表ニ掲クル死亡數ハ毎年一月初旬迄ニ到達シタル報告ニヨ

病名不詳中ニ置ク

心臟病脊髓病腦病腎臟病子宮病等ノ如ク單ニ病種ニ屬スルモノハ總テ之レヲ

臟炎中ニ置ク腎臟炎ハ貌禮篤病ヲ含ム

急性腎臟炎ハ經過卅日迄ノモノヲ舉ケ其以上及ビ經過不詳ナルモノヲ慢性腎

肝臟間質炎ハ肝臟硬變チルローゼヲ含ム

急性肺炎ハ經過滿二ヶ月迄ノモノヲ舉ケ二ヶ月以上ヲ慢性肺炎トス

精神病ニハ精神錯亂及ビ癲狂等ヲ含ム

心臟辨膜病ニハ心臟内膜炎ヲ含ム

舌護謨腫梅毒性咽頭炎ハ微毒中ニ置ク

間歇熱ハ麻刺里亞熱中ニ置ク

一同病異名 或ハ病名ニシテ不明ナルモノハ左ノ標準ニ依リ之ヲ記入ス

凡 例

トヲ得ン耶

明治三十二年十二月

醫學博士 中濱東一郎識

ニ至ルモ本社ノ醫事統計ハ秩然トシテ一目ノ下ニ明了ナルコ

以降毎歲ノ死亡ニ繫ルモノヲ本書各表ニ添加セハ幾百年ノ後

チ「カード」ニ登録シ以テ統計ノ基礎ヲ立テタルモノナレハ自今

モノアラシクコトヲ然レモ及フ限リ努メテ調査ヲ加ヘ渾テ之レ

PREFACE.

I was appointed Medical Director of the Meiji Life Insurance Company Limited in 1896 (29th year of Meiji) and intrusted with the task of superintending all matters relating to medicine. It was, as is now, my special care, when there happened to be any doubtful point in the reports of deaths as regards the names or courses of the particular diseases, to refer to the responsible doctors and to make such alterations or corrections as were necessary.

The different tables of deaths previously issued from the company, for the period beginning with July 9, 1881, when the company started in the business, and closing at the end of 1897, were not free from flagrant errors.

In compiling this book, a through investigation has been instituted into the applications for insurance, medical reports, and death certificates of the entire number of the diseased, and all necessary corrections effected in the names and courses of the diseases, the dates of deaths, the ages, and occupation or profession of the diseased. Nevertheless, the fact that the present lists include no disease that has been named by the results of a dissecting operation, affords some ground for suspicion that the names of diseases given are not uniformly correct. No pains, however, have

一一人 ニシテ數口契約シ居ルモノハ一人トシテ計算ス

一診査後 年月ハ一ヶ月三十日トシテ計算ス

ヲ引去リ殘數ヲ以テ除スルモノトス

但診査後年月若クハ死亡年齢不明ナルモノアルトキハ各病總人員ヨリ之レ算シタル延年月數ヲ除シ得タル數トス死亡年齢平均數ノ計算法亦之レニ同シ

一第十表 診査後年月ノ平均數ハ各病總人員ヲ以テ同病中ノ各診査後年月ヲ通

スル新結約人員ヲ合シ未タ死亡解約及滿期人員ヲ差引カサルモノヲ云フ

員ヲ扣除シタル現在人員ヲ云ヒ各年末ノ人員ハ其年初ノ人員ニ其年度ニ屬

但第四表各年初ノ人員ハ前年末人員ヨリ其年度ニ屬スル死亡解約及滿期人

been spared on my part in contriving to ensure correctness, and I have laid a solid foundation for our future statistical work recording on cards all the above-described requisites for the purpose. These present lists, supplemented with all future reports, will be found a most orderly, trustworthy record of our insurance business till hundreds years hence.

TOKYO DEC. 1899.

DR. TOICHIRO NAKAHAMA.

Where the same disease has many different names or its name is not plain, the following rule is observed. Intermittent Fever is classified under Malaria. Gumma of Tongue is classified under Syphilis, Valvular Disease of Heart includes Endocarditis, Mental Disease includes Mental Disturbance and Mania. Acute Pneumonia is so named when its course is not longer than two months, and when longer than two months it is named chronic Pneumonia.

Hepatitis Interstitialis includes Scirrhus of Liver. Acute Nephritis is so named when its course is not longer than 30 days, and when longer than 30 days or when its course is not plain, it is classified under chronic Nephritis. Nephritis includes Brights Disease.

Heart Disease, Disease of Spinal Cord, Brain Disease, Disease of Kidney and Disease of Uterus, of which those merely reported under their names each respectively without any specification, are classified as indefinite.

The number of the deceased in the Tables III and IV, is given according to the reports received before the first part of January: those received after that date being included in the list for the

II

following year, is consequently different from the numbers given in the other tables, which are for each chronological year.

The number of the insured given at the beginning of every year as shown in the Table IV, is the number given at the end of the preceding year minus the number of those who are deceased, those who have withdrawn their contracts, and those whose terms for insurance are expired during that year.

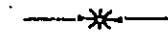
The number of the insured at the end of every year is the number given at the beginning of that year, plus the number of those newly insured, the number deceased or withdrawn during that year not being subtracted.

The average lapse of time after the bodily examination of the insured as given in the Table X, is the quotient obtained by dividing the total sum of the lengths of time by the number of the insured under the same class of disease. The same method of calculation is followed in obtaining the average age of the deceased.

Both items are omitted when not clear. Thirty days are counted as one month. The average length of time after the physical examination where one person is insured under different classes of insurance, he is counted as one person.



INDEX.



- Table I. Showing the Number of Deaths, classified in Diseases and distinguishing Males and Females in each year from 1882 to 1898.
- Table II. Showing the Number of Deaths arranged according to Sexes in different monthes, during the year 1882 to 1898.
- Table III. Showing the Number of Deaths of the assured and the Number of Persons on whose lives Policies were Discontinued and Expired during the years 1881 to 1898.
- Table IV. Showing the Ratio of Deaths in each year from 1881 to 1898.
- Table V. Showing abstract of the Number of Deaths among the assured classified in accordance with the Diseases of high mortality from 1881 to 1898.
- Table VI. Showing the proportional Number of Deaths and the Ratio of Diseases, distinguishing Males and Females, from 1881 to 1898.
- Table VII. Diagram A in explanation of Table VI.
- Table VIII. Diagram B in explanation of Table VI.
- Table IX. Diagram, giving a comparison of the Number of Deaths from Consumption and Apoplexy with total Number of Deaths from all Diseases in each year from 1882 to 1898 in reference with Table XI.
- Table X. Showing the period elapsed from the date of medical examination till death, the ages at death etc., of those dying among the assured, in each class of Disease.
- Table XI. Showing the Number of Deaths arranged according to each Disease distinguishing Males and Females, for each of the 17 years from 1882 to 1898.

目 次

- 第一 各病類年別表
- 第二 死亡年月男女別表
- 第三 各年被保人員死亡解約及滿期人員表
- 第四 被保人員ニ對スル各年死亡千分比例表
- 第五 多數死亡アリシ疾病及死亡數
- 第六 病類別死亡百分比例表
- 第七 各病類別百分比例圖表
- 第八 各病類別人員比較圖表
- 第九 死亡全數ニ對スル肺癆及腦溢血ノ各年度比較
圖表
- 第十 各病診査後年月及死亡年齡一覽表
- 第十一 各病死亡年別一覽表

(第一) 各病類年別表

TABLE I.

Showing the Number of Deaths, classified in Disease and distinguishing Males and Females in each year from 1882 to 1898.

病類別 Class of Diseases.	性 Sexes.	明治	"	"	"	"	"	"
		十五年 1882.	十六年 1883.	十七年 1884.	十八年 1885.	十九年 1886.	二十年 1887.	廿一年 1888.
傳染病 Infectious Diseases.	男 M.	4	5	1	4	20	4	7
	女 F.	0	0	0	0	1	0	0
	計 T.	4	5	1	4	21	4	7
發育及營養的病 Developmental and Nutritional Diseases.	男 M.	0	0	0	3	2	2	3
	女 F.	0	0	0	0	1	1	0
	計 T.	0	0	0	3	3	3	3
皮膚及筋病 Diseases of Skin and Muscles.	男 M.	0	1	0	2	0	0	1
	女 F.	0	0	0	0	0	0	0
	計 T.	0	1	0	2	0	0	1
骨及關節病 Diseases of Bones and Joints.	男 M.	0	1	0	0	0	0	0
	女 F.	0	0	0	0	0	0	0
	計 T.	0	1	0	0	0	0	0
血行器病 Diseases of Circulatory Organs.	男 M.	2	1	1	2	1	4	5
	女 F.	0	0	1	0	0	0	0
	計 T.	2	1	2	2	1	4	5
神經及五官病 Diseases of Nervous System and Special Senses.	男 M.	2	3	2	3	4	6	2
	女 F.	0	0	0	0	1	0	0
	計 T.	2	3	2	3	5	6	2
呼吸器病 Diseases of Respiratory Organs.	男 M.	3	3	5	12	16	8	9
	女 F.	0	0	0	1	0	1	0
	計 T.	3	3	5	13	16	9	9
消化器病 Diseases of Digestive Organs.	男 M.	1	1	1	2	2	1	8
	女 F.	1	0	1	0	1	0	0
	計 T.	2	1	2	2	3	1	8
泌尿及生殖器病 Diseases of Genito-Urinary Organs.	男 M.	0	1	0	1	1	0	0
	女 F.	0	0	0	0	0	0	2
	計 T.	0	1	0	1	1	0	2
外傷性變死 Violent Deaths.	男 M.	1	0	2 (1)	0	2 (1)	4 (1)	0
	女 F.	0	0	0	0	0	0	0
	計 T.	1	0	2 (1)	0	2 (1)	4 (1)	0
病名不詳 Causes of Deaths unknown.	男 M.	0	0	0	0	0	0	1
	女 F.	0	0	0	0	0	0	0
	計 T.	0	0	0	0	0	0	1
合計 TOTAL.	男 M.	13	16	12 (1)	29	48 (1)	29 (1)	36
	女 F.	1	0	2	1	4	2	2
	計 T.	14	16	14 (1)	30	52 (1)	31 (1)	38

* 本表及ヒ他表中一人ニシテ數種ノ病ヲ兼ヌルモノハ著明ノモノニ限リ各其所屬ノ疾病中ニ之レヲ掲ケ一病ヲ除ク他ハ更ニ括弧内ニ其數ヲ記シ以テ重記シタル數ヲ示ス

TABLE I.—Continued.

明治	"	"	"	"	"	"	"	"	"	合計
廿二年 1889.	廿三年 1890.	廿四年 1891.	廿五年 1892.	廿六年 1893.	廿七年 1894.	廿八年 1895.	廿九年 1896.	卅年 1897.	卅一年 1898.	Total.
3	31	13	17	22	28	121	39	35 (1)	38 (1)	392 (2)
1	5	5	3	1	2	8	4	7	4	41
4	36	18	20	23	30	129	43	42 (1)	42 (1)	433 (2)
7	12	15	9	12	15	24	25	27	34	190
1	0	0	1	3	5	4	8	15	16 (1)	55 (1)
8	12	15	10	15	20	28	33	42	50 (1)	245 (1)
1	2	0	4	2	1	1	4	2 (1)	2 (1)	23 (2)
0	0	0	1	0	0	1	0	0	0	2
1	2	0	5	2	1	2	4	2 (1)	2 (1)	25 (2)
0	0	0	0	1	1	1	1	6 (2)	3 (1)	14 (3)
0	0	0	0	1	0	0	1	0	1	3
0	0	0	0	2	1	1	2	6 (2)	4 (1)	17 (3)
3	4	4	7	16	9	15	15	19 (1)	13 (3)	121 (4)
0	0	1	0	0	0	0	4	2	3	11
3	4	5	7	16	9	15	19	21 (1)	16 (3)	132 (4)
10	13	14	28	26	38	54	66	82 (4)	76 (1)	429 (5)
0	0	2	3	7	11	8	9	8 (1)	13	62 (1)
10	13	16	31	33	49	62	75	90 (5)	39 (1)	491 (6)
15	22	30	45	65	57	88	126 (1)	112 (13)	139 (8)	755 (22)
2	1	0	3	4	5	9	16	23 (2)	19	84 (2)
17	23	30	48	69	62	97	142 (1)	135 (15)	158 (8)	839 (24)
9	12	19	17	17	25	56	46	63 (10)	64 (5)	344 (15)
0	1	2	6	3	6	10	9	14 (2)	5 (1)	59 (3)
9	13	21	23	20	31	66	55	77 (12)	69 (7)	403 (19)
1	2	5	3	2	6	10	9	8	22 (1)	71 (1)
1	1	2	0	0	1	6	5	6 (3)	5	29 (3)
2	3	7	3	2	7	16	14	14 (3)	27 (1)	100 (4)
4	4	3	7 (1)	8 (2)	12 (2)	10 (1)	9	16 (4)	13 (4)	95 (17)
0	2	0	0	1 (1)	0	0	0	0	0	3 (1)
4	6	3	7 (1)	9 (3)	12 (2)	10 (1)	9	16 (4)	13 (4)	98 (18)
0	0	5	2	4	4	17	7	3	6	49
0	0	0	0	3	2	1	3	0	2	11
0	0	5	2	7	6	18	10	3	8	60
53	102	108	139 (1)	175 (2)	196 (2)	397 (1)	347 (1)	373 (36)	410 (26)	2483 (72)
5	10	12	17	23 (1)	32	47	59	75 (8)	68 (2)	380 (11)
58	112	120	156 (1)	198 (3)	228 (2)	444 (1)	406 (1)	448 (44)	473 (28)	2843 (83)

* The number in the parenthesis in this and all other tables signifying the number of assured, dying by a certain Complication, is counted also into the number of deaths mentioned under the other class of disease.

(第二) 死亡年月男女別表

TABLE II.

Showing the Number of Deaths arranged according to Sexes in different monthes, during the Years 1882-1898.

月 Month.	別 Sexes. 性	明治	十五年	十六年	十七年	十八年	十九年	二十年	廿一年
		1882.	1883.	1884.	1885.	1886.	1887.	1888.	
一 January.	M.	1	2	1	2	0	1	4	
	F.	0	0	0	0	0	0	0	
	T.	1	2	1	2	0	1	4	
二 February.	M.	0	1	0	1	3	1	1	
	F.	0	0	0	0	0	0	0	
	T.	0	1	0	1	3	1	1	
三 March.	M.	0	1	2	1	2	1	1	
	F.	0	0	0	0	0	0	0	
	T.	0	1	2	1	2	1	1	
四 April.	M.	0	2	1	1	2	3 (1)	1	
	F.	0	0	0	0	0	1	1	
	T.	0	2	1	1	2	4 (1)	2	
五 May.	M.	0	1	0	3	2	5	4	
	F.	1	0	0	0	0	1	0	
	T.	1	1	0	3	2	6	4	
六 June.	M.	1	1	1	2	6 (1)	3	3	
	F.	0	0	1	0	1	0	0	
	T.	1	1	2	2	7 (1)	3	3	
七 July.	M.	1	1	0	2	6	2	5	
	F.	0	0	0	0	1	0	0	
	T.	1	1	0	2	7	2	5	
八 August.	M.	2	1	0	6	10	4	2	
	F.	0	0	0	0	0	0	0	
	T.	2	1	0	6	10	4	2	
九 September.	M.	2	0	4	5	8	1	5	
	F.	0	0	0	0	1	0	1	
	T.	2	0	4	5	9	1	6	
十 October.	M.	3	0	2 (1)	2	1	1	4	
	F.	0	0	0	0	0	0	0	
	T.	3	0	2 (1)	2	1	1	4	
十一 November.	M.	0	3	0	2	7	1	3	
	F.	0	0	0	0	1	0	0	
	T.	0	3	0	2	8	1	3	
十二 December.	M.	3	3	1	2	1	5	3	
	F.	0	0	1	1	0	0	0	
	T.	3	3	2	3	1	5	3	
Month of Deaths 不詳 unknown.	M.	0	0	0	0	0	1	0	
	F.	0	0	0	0	0	0	0	
	T.	0	0	0	0	0	1	0	
合 TOTAL.	M.	13	16	12 (1)	29	48 (1)	29 (1)	36	
	F.	1	0	2	1	4	2	2	
	T.	14	16	14 (1)	30	52 (1)	31 (1)	38	

TABLE II.—Continued.

廿二年	廿三年	廿四年	廿五年	廿六年	廿七年	廿八年	廿九年	三十年	卅一年	合計
1889.	1890.	1891.	1892.	1893.	1894.	1895.	1896.	1897.	1898.	Total.
4	4	15	9	15	13	25	25	33 (2)	37 (3)	191 (5)
2	0	1	0	2	6	4	4	2	4	25
6	4	16	9	17	19	29	29	35 (2)	41 (3)	216 (6)
4	2	3	9	12 (1)	14	25	18	41 (5)	32 (6)	167 (12)
0	0	0	3	1	2	2	7	4	5	24
4	2	3	12	13 (1)	16	27	25	45 (6)	37 (6)	191 (12)
3	4	11	10	16	18	29	35	26 (1)	35 (1)	195 (2)
1	0	0	2	1	4	5	4	5 (1)	10 (1)	32 (2)
4	4	11	12	17	22	34	39	31 (2)	45 (2)	227 (4)
3	6	5	11	12	15	23	33	22	34 (3)	174 (4)
1	2	0	1	1	3	6	4	5 (1)	3	28 (1)
4	8	5	12	13	18	29	37	27 (1)	37 (3)	202 (5)
4	4	5	9	10	15	21 (1)	25	25 (1)	31 (1)	164 (3)
0	0	1	0	4 (1)	1	3	7	5 (1)	6	29 (2)
4	4	6	9	14 (1)	16	24 (1)	32	30 (2)	37 (1)	193 (5)
4	7	9	8	9	13 (1)	27	21	25 (3)	36 (1)	176 (6)
0	0	0	2	1	1	2	4	6	10	28
4	7	9	10	10	14 (1)	29	25	31 (3)	46 (1)	204 (6)
4	8	5	14	12	17	42	34	37 (3)	28 (2)	218 (6)
0	2	1	2	2	2	5	6	7	8	36
4	10	6	16	14	19	47	40	44 (3)	36 (2)	254 (6)
10	17	10	14	13	24 (1)	56	27	39 (3)	40 (4)	275 (8)
0	4	0	1	1	2	2	2	7 (1)	3	22 (1)
10	21	10	15	14	26 (1)	58	29	46 (4)	43 (4)	297 (9)
7	16	11	9	20	23	56	30	32 (5)	28	257 (5)
0	1	4	4	5	1	8	3	3	8	39
7	17	15	13	25	24	64	33	35 (5)	36	296 (5)
4	11	16	15 (1)	18	17	39	29	30 (4)	34 (2)	226 (8)
1	1	2	1	1	5	4	8	8	6 (1)	37 (1)
5	12	18	16 (1)	19	22	43	37	38 (4)	40 (3)	263 (9)
1	10	9	15	23 (1)	15	28	38	31 (4)	44 (2)	230 (7)
0	0	0	1	2	2	4	6	11 (3)	4	31 (3)
1	10	9	16	25 (1)	17	32	44	42 (7)	48 (2)	261 (10)
5	13	8	16	15	11	26	32 (1)	32 (5)	31 (1)	207 (7)
0	0	3	0	2	3	2	4	12 (1)	1	29 (1)
5	13	11	16	17	14	28	36 (1)	44 (6)	32 (1)	236 (8)
0	0	1	0	0	1	0	0	0	0	3
0	0	0	0	0	0	0	0	0	0	0
0	0	1	0	0	1	0	0	0	0	3
53	102	108	139 (1)	175 (2)	196 (2)	397 (1)	347 (1)	373 (36)	410 (26)	2483 (72)
5	10	12	17	23 (1)	32	47	59	75 (8)	68 (2)	360 (11)
58	112	120	156 (1)	198 (3)	228 (2)	444 (1)	406 (1)	448 (44)	478 (22)	2843 (83)

(第三) 各年被保人員死亡解約及滿期人員表

TABLE III.

Showing the Number of Deaths of the Assured and the Number of Persons on whose lives Policies were Discontinued and Expired during the years 1881 to 1898.

年次 Year.	明治十四年 1881.	"十五年 1882.	"十六年 1883.	"十七年 1884.	"十八年 1885.	"十九年 1886.	"廿年 1887.
前年末被保人現在員 Number of the Assured at the close of the preceding year.	0	646	1,322	1,654	2,143	2,160	2,556
新結約 Number of Persons effecting New Policies.	646	725	432	706	260	676	1,005
死亡 Died.	0	14	15	13	31	51	30
解約 Discontinued.	0	35	85	204	212	229	300
滿期 Expired.	0	0	0	0	0	0	0
本年末被保人現在員 Number of the Assured at the close of the year.	646	1,322	1,654	2,143	2,160	2,556	3,231
同上前年末ニ比シ増 Increase in Number of the Assured in the year compared with the Preceding year.	646	676	332	489	17	396	675

TABLE III.—Continued.

明治廿一年 1888.	"廿二年 1889.	"廿三年 1890.	"廿四年 1891.	"廿五年 1892.	"廿六年 1893.	"廿七年 1894.	"廿八年 1895.	"廿九年 1896.	卅年 1897.	卅一年 1898.
3,231	4,397	6,489	9,011	11,360	14,233	16,761	20,968	26,573	30,228	32,999
1,433	2,336	3,048	3,241	3,921	4,007	5,582	7,210	5,537	5,374	5,802
39	55	113	118	157	193	224	430	417	386	442
228	189	413	772	887	1,285	1,149	1,171	1,461	2,210	2,448
0	0	0	2	4	1	2	4	4	7	7
4,397	6,489	9,011	11,360	14,233	16,761	20,968	26,573	30,228	32,999	35,904
1,166	2,092	2,522	2,349	2,873	2,528	4,207	5,605	3,655	2,771	2,905



(第四) 被保人員ニ對スル各年死亡千分比例表

TABLE IV.

Showing the Ratio of Deaths in each year from 1881 to 1898.

年次 Year.		明治十四年 1881.	十五年 1882.	十六年 1883.	十七年 1884.	十八年 1885.	十九年 1886.	二十年 1887.
被保人員 Number of the Assured.	年初人員 Beginning of the year.	0	646	1,322	1,654	2,143	2,166	2,556
	年末人員 (死亡解約及満期ヲ含ム) End of the year. (Including died, Discontinued and Expired.)	646	1,371	1,754	2,360	2,409	2,836	3,561
	同上平均 Average.	0	1,009	1,538	2,007	2,276	2,501	3,059
死亡人員 Number of Deaths.		0	14	15	13	31	51	30
被保人員ニ對スル死亡千分比例 Ratio of Deaths per 1,000.		0	13,875	9,752	6,477	13,620	20,391	9,807

TABLE IV.—Continued.

明治廿一年 1888.	廿二年 1889.	廿三年 1890.	廿四年 1891.	廿五年 1892.	廿六年 1893.	廿七年 1894.	廿八年 1895.	廿九年 1896.	卅年 1897.	卅一年 1898.
3,231	4,397	6,489	9,011	11,360	14,233	16,761	20,968	26,573	30,228	32,999
4,664	6,733	9,537	12,252	15,281	18,240	22,343	28,178	32,110	35,602	38,801
3,948	5,565	8,013	10,632	13,321	16,237	19,552	24,573	29,342	32,915	35,900
39	55	113	118	157	193	224	430	417	386	442
9,878	9,883	14,102	11,099	11,786	11,886	11,456	17,493	14,211	11,727	12,312

(第五) 多數死亡アリシ疾病及死亡數(自明治十四年
至明治卅一年)

TABLE V.

Showing abstract of the Number of Deaths among the assured classified in accordance with the Diseases of high mortality from 1881 to 1898.

病名 Diseases.	人員 Number of Deaths.		
	男 Male.	女 Female.	計 Total.
肺癆 Phthisis pulmonum.	469 (5)	45	514 (5)
腦溢血 Apoplexia cerebri.	241 (2)	29	270 (2)
腸窒扶斯 Typhus abdominalis.	111	8	119
虎列刺 Cholera.	101	10	111
胃癌 Carcinoma ventriculi.	86	21	107
急性肺炎 Pneumonia acuta.	90 (3)	14 (1)	104 (4)
心臟瓣膜病 Morbi valvulorum cordis.	84 (3)	7	91 (3)
脚氣 Beri—beri.	84 (1)	6	90 (1)
腹膜炎 Peritonitis.	57 (2)	12	69 (2)

TABLE V.—Continued.

病名 Diseases.	人員 Number of Deaths.		
	男 Male.	女 Female.	計 Total.
胃腸加答兒 Gastro—enteritis.	56	9	65
腦膜炎 Meningitis.	53	6	59
慢性腎臟炎 Nephritis chronica.	45 (1)	8	53 (1)
胃加答兒 Gastritis.	44 (3)	8	52 (3)
肋膜炎 Pleuritis.	45 (2)	6	51 (2)
赤痢 Dysentaria.	41	7	48
腦充血 Hyperaemia cerebri.	34	13	47
慢性肺炎 Pneumonia chronica.	37 (2)	4	41 (2)

(第六) 病類別死亡百分比例表

TABLE VI.

Showing the Proportional Number of Deaths and the Ratio of Deaths per 100 arranged according to the classification of Diseases, distinguishing Males and Females, from 1881 to 1898.

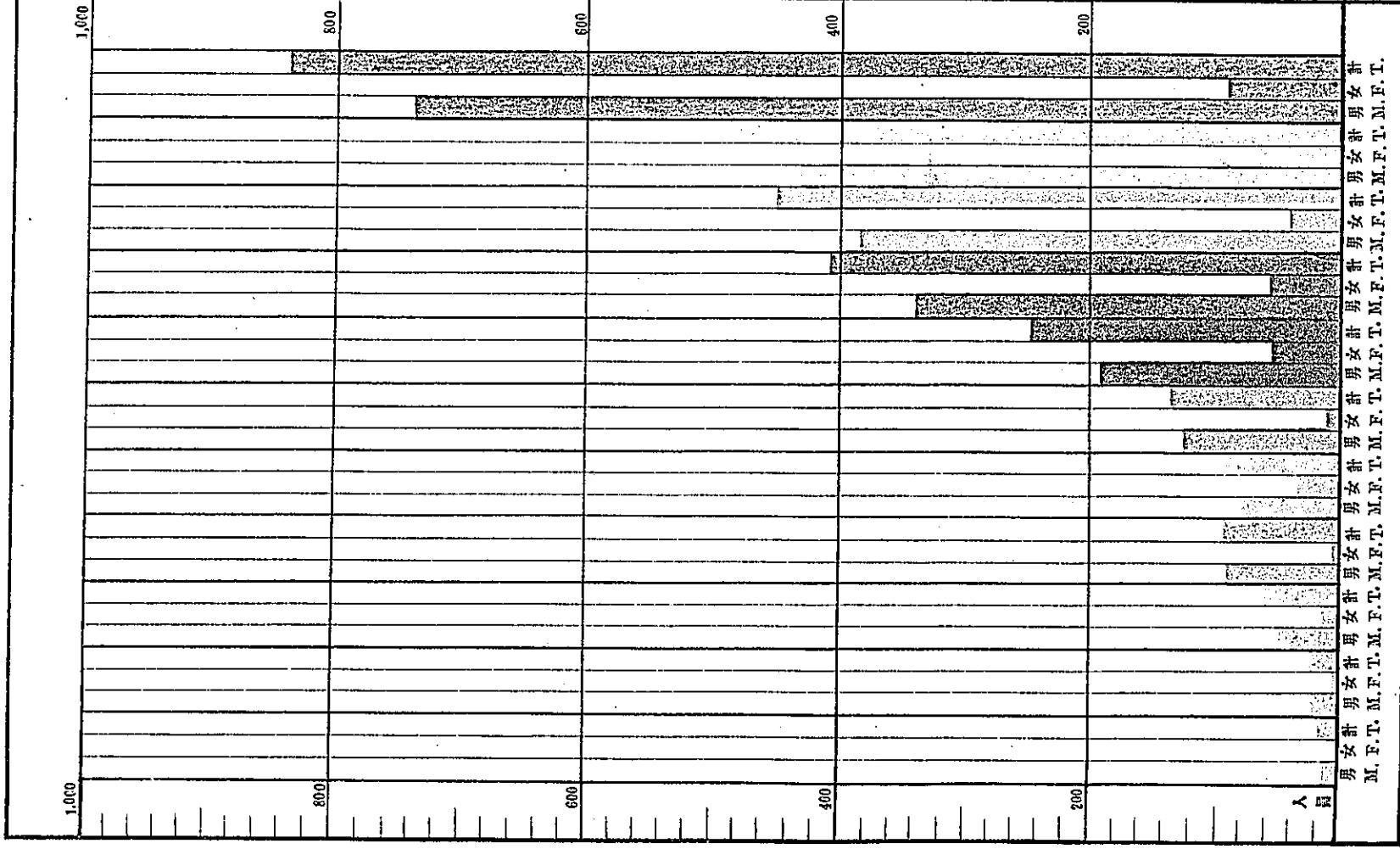
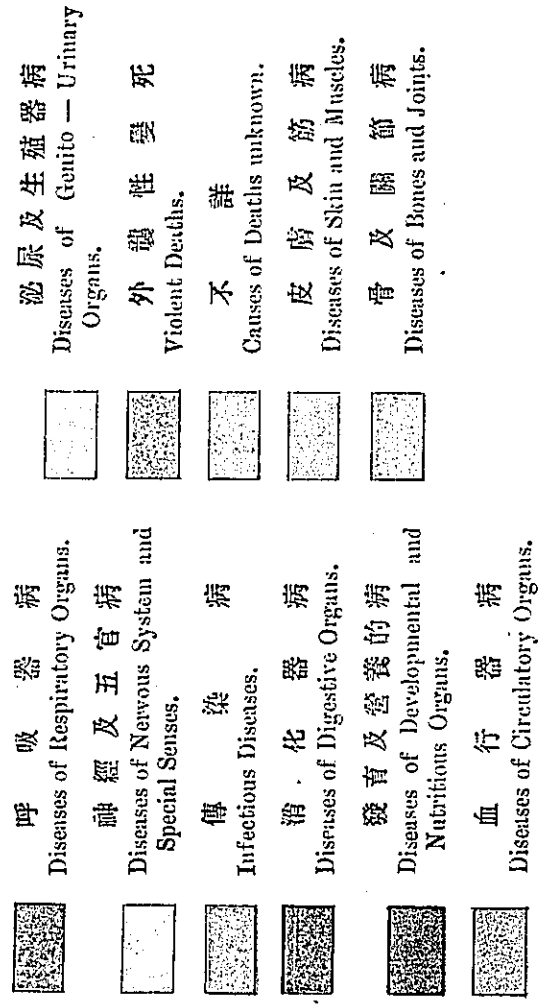
病 類 別 Class of Diseases.	死 亡 人 員 Number of Deaths.			全死亡數=對スル 百分比例 Ratio of Deaths per 100 against the total number of deaths assured.		
	男 M.	女 F.	計 T.	男 M.	女 F.	計 T.
	傳 染 病 Infectious Diseases.	392 ⁽²⁾	41	433 ⁽²⁾	15.79	11.39
發育及營養的病 Developmental and Nutritious Diseases.	190	55 ⁽¹⁾	245 ⁽¹⁾	7.65	15.23	8.62
皮 膚 及 筋 病 Diseases of Skin and Muscles.	23 ⁽²⁾	2	25 ⁽²⁾	.93	.56	.88
骨 及 關 節 病 Diseases of Bones and Joints.	14 ⁽³⁾	3	17 ⁽³⁾	.56	.83	.60
血 行 器 病 Diseases of circulatory Organs.	121 ⁽⁴⁾	11	132 ⁽⁴⁾	4.87	3.06	4.64
神 經 及 五 官 病 Diseases of Nervous System and Special Senses.	429 ⁽⁵⁾	62 ⁽¹⁾	491 ⁽⁵⁾	17.28	17.22	17.27

TABLE VI.—Continued.

病 類 別 Class of Diseases.	死 亡 人 員 Number of Deaths.			全死亡數=對スル 百分比例 Ratio of Deaths per 100 against the total number of deaths assured.		
	男 M.	女 F.	計 T.	男 M.	女 F.	計 T.
	呼 吸 器 病 Diseases of Respiratory Organs.	755 ⁽²²⁾	84 ⁽²⁾	839 ⁽²⁴⁾	30.41	23.33
消 化 器 病 Diseases of Digestive Organs.	344 ⁽¹⁰⁾	59 ⁽³⁾	403 ⁽¹⁹⁾	13.85	16.39	14.18
泌 尿 及 生 殖 器 病 Diseases Genito-Urinary Organs.	71 ⁽¹⁾	29 ⁽³⁾	100 ⁽⁴⁾	2.86	8.06	3.52
外 傷 性 變 死 Violent Deaths.	95 ⁽¹⁷⁾	3 ⁽¹⁾	98 ⁽¹⁸⁾	3.83	.83	3.44
病 名 不 詳 Causes of Deaths unknown.	49.	11	60	1.97	3.06	2.11
合 計 TOTAL.	2,483 ⁽⁷²⁾	360 ⁽¹¹⁾	2,843 ⁽⁸³⁾	100.00	100.00	100.00

TABLE VIII.

Diagram B in explanation of Table VI.

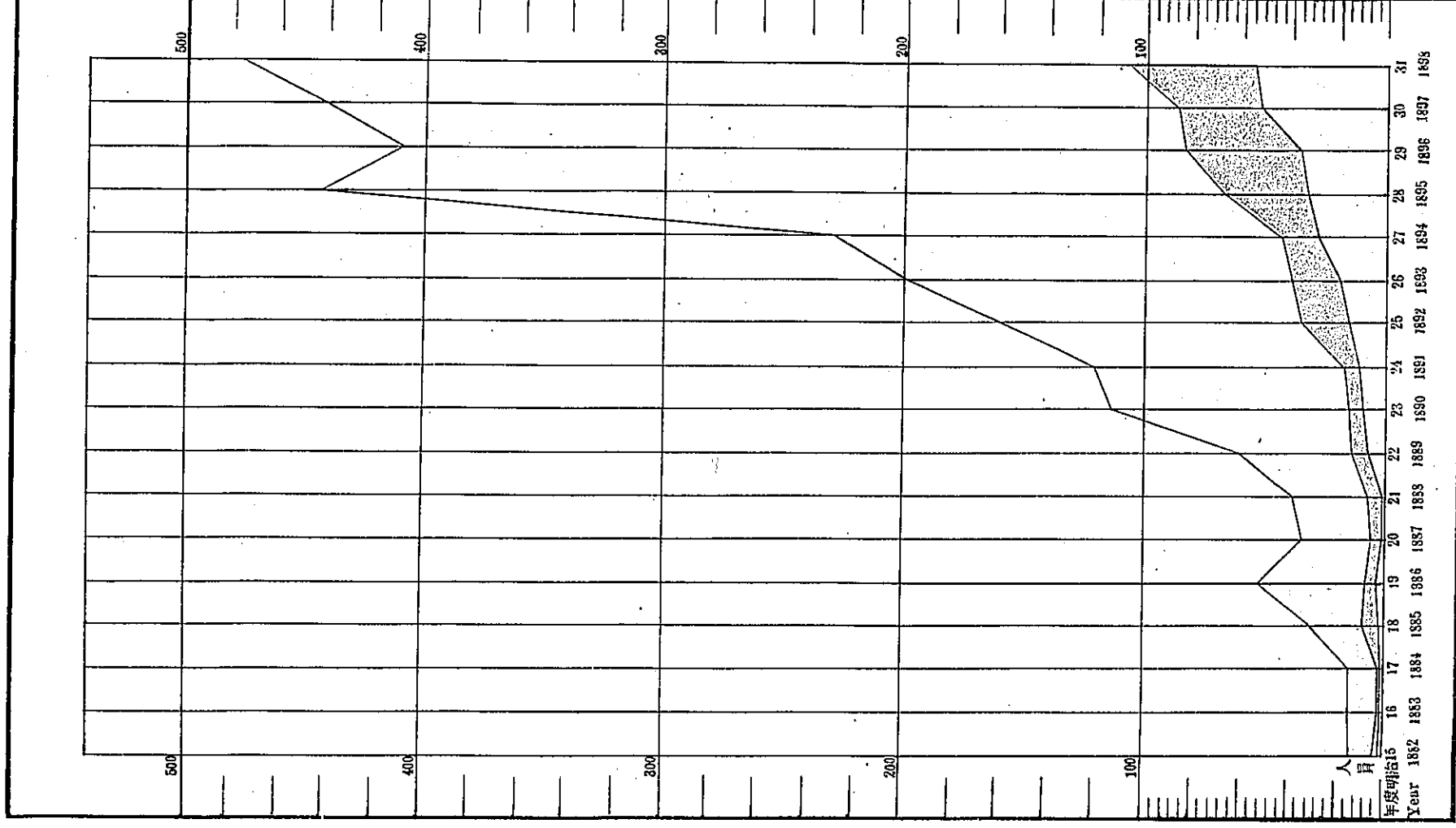


(第九)

死亡全數ニ對スル肺癆及腦溢血ノ各年度比較圖表

TABLE IX.

Diagram, giving a comparison of the Number of Deaths from Consumption and Apoplexy with total Number of Deaths from all Diseases in each year from 1882 to 1898 in reference with Table XI.



(第十一) 各病死亡年別一覽表

TABLE XI.

Showing the Number of Deaths arranged according to each Disease, distinguishing Males and Females, for each of the 17 years from 1882 to 1898.

病名 Diseases.	明治十五年 1882.			明治十六年 1883.			明治十七年 1884.		
	男 M.	女 F.	計 T.	男 M.	女 F.	計 T.	男 M.	女 F.	計 T.
傳染病 Infectious Diseases.	4	0	4	5	0	5	1	0	1
腸 壘 扶 斯 Typhus abdominalis.	1	0	1	4	0	4	1	0	1
虎 列 刺 Cholera.	1	0	1	0	0	0	0	0	0
赤 痢 Dysentery.	0	0	0	0	0	0	0	0	0
痘 瘡 Variola.	0	0	0	0	0	0	0	0	0
麻 刺 里 亞 熱 Malaria.	0	0	0	1	0	1	0	0	0
弛 張 熱 Febris Recurrens.	0	0	0	0	0	0	0	0	0
流行性感胃 Influenza.	0	0	0	0	0	0	0	0	0
脚 氣 Beri—Beri.	2	0	2	0	0	0	0	0	0
微 毒 Syphilis.	0	0	0	0	0	0	0	0	0
羅 斯 Erysipelas.	0	0	0	0	0	0	0	0	0
麻 疹 Morbilli.	0	0	0	0	0	0	0	0	0
創傷質布埤里 Diphtheritis vulneris.	0	0	0	0	0	0	0	0	0
破 傷 風 Tetanus.	0	0	0	0	0	0	0	0	0
洪 水 熱 Uberschwemmungsfeber.	0	0	0	0	0	0	0	0	0
ペ ス ト Pests.	0	0	0	0	0	0	0	0	0
質 布 埤 里 Diphtheria.	0	0	0	0	0	0	0	0	0
產 婦 熱 Febris Puerperalis.	0	0	0	0	0	0	0	0	0
發育及營養的病 Developmental and Nutritious Diseases.	0	0	0	0	0	0	0	0	0
膿 毒 症 Pyaemia.	0	0	0	0	0	0	0	0	0

TABLE XI.—Continued.

明治十八年 1885.			明治十九年 1886.			明治二十年 1887.			明治廿一年 1888.			明治廿二年 1889.			明治廿三年 1890.		
男 M.	女 F.	計 T.	男 M.	女 F.	計 T.	男 M.	女 F.	計 T.	男 M.	女 F.	計 T.	男 M.	女 F.	計 T.	男 M.	女 F.	計 T.
4	0	4	20	1	21	4	0	4	7	0	7	3	1	4	31	5	36
0	0	0	5	0	5	3	0	3	3	0	3	1	1	2	4	1	5
3	0	3	12	0	12	0	0	0	0	0	0	0	0	0	20	3	23
0	0	0	0	0	0	0	0	0	0	0	0	0	0	0	1	0	1
0	0	0	0	0	0	0	0	0	0	0	0	0	0	0	0	0	0
0	0	0	0	0	0	0	0	0	1	0	1	0	0	0	1	0	1
0	0	0	0	0	0	0	0	0	0	0	0	1	0	1	0	0	0
0	0	0	0	0	0	0	0	0	0	0	0	0	0	0	0	0	0
1	0	1	3	1	4	1	0	1	3	0	3	1	0	1	5	1	6
0	0	0	0	0	0	0	0	0	0	0	0	0	0	0	0	0	0
0	0	0	0	0	0	0	0	0	0	0	0	0	0	0	0	0	0
0	0	0	0	0	0	0	0	0	0	0	0	0	0	0	0	0	0
0	0	0	0	0	0	0	0	0	0	0	0	0	0	0	0	0	0
0	0	0	0	0	0	0	0	0	0	0	0	0	0	0	0	0	0
0	0	0	0	0	0	0	0	0	0	0	0	0	0	0	0	0	0
0	0	0	0	0	0	0	0	0	0	0	0	0	0	0	0	0	0
0	0	0	0	0	0	0	0	0	0	0	0	0	0	0	0	0	0
3	0	3	2	1	3	2	1	3	3	0	3	7	1	8	12	0	12
0	0	0	0	0	0	0	0	0	0	0	0	1	0	1	1	0	1