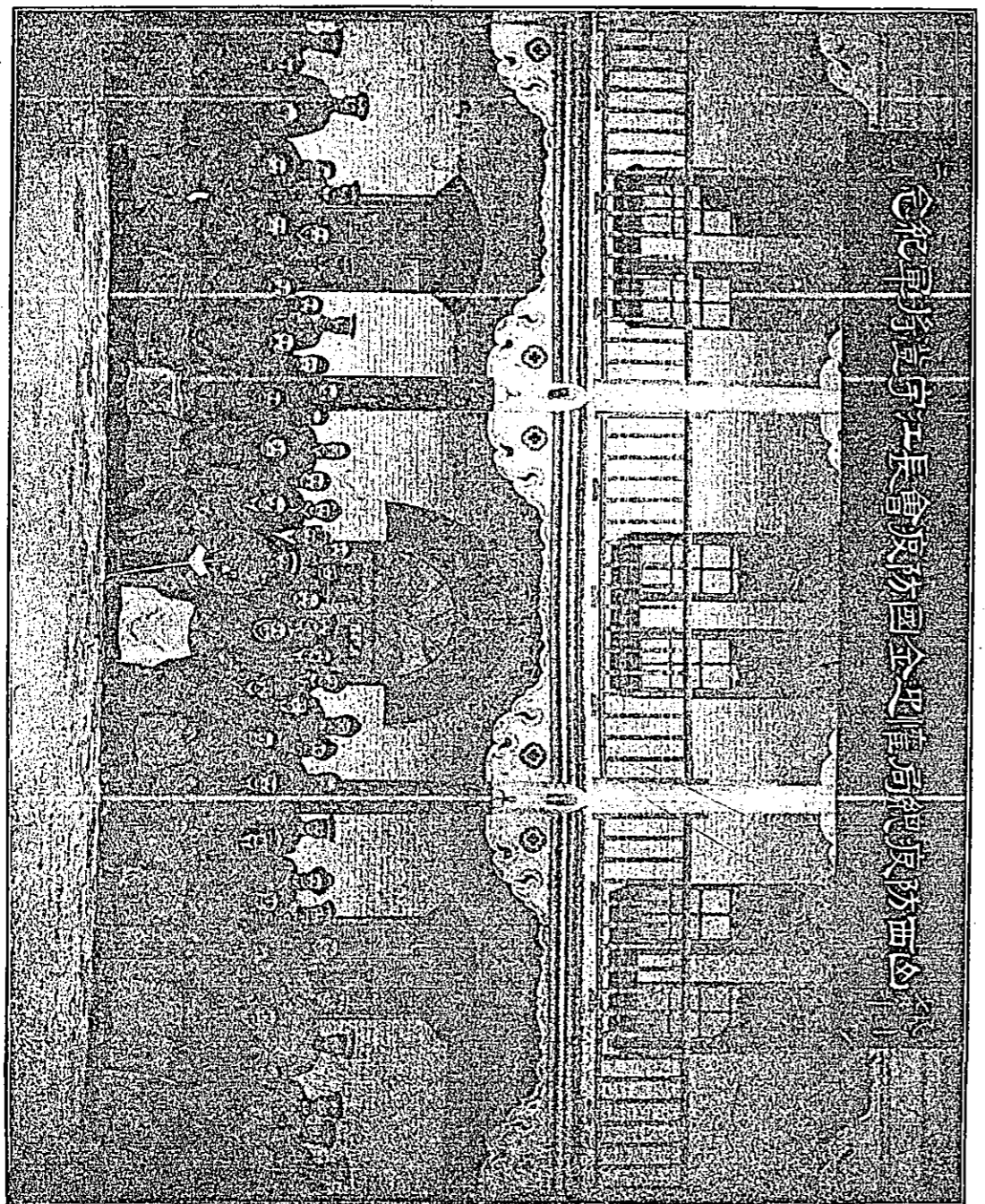
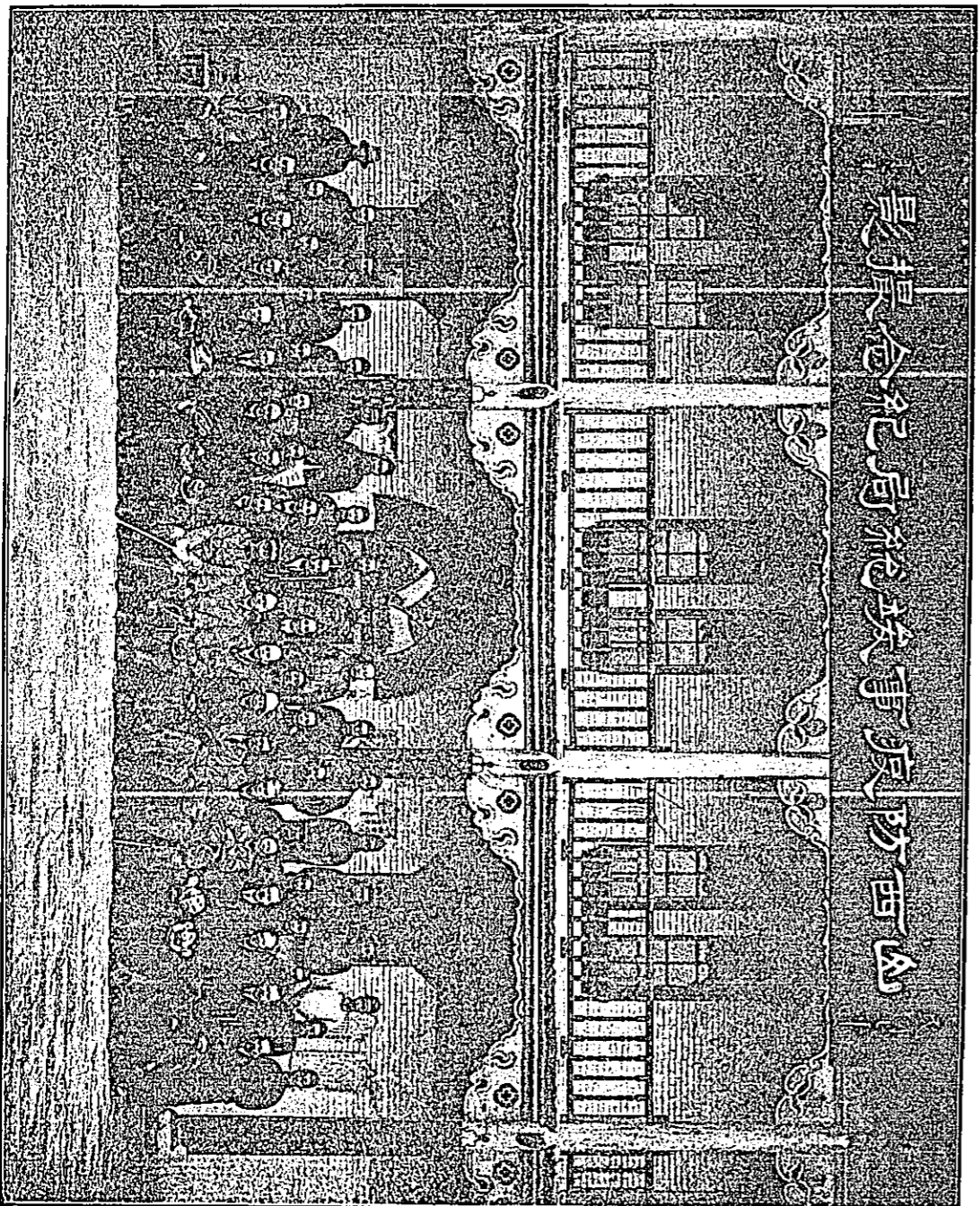


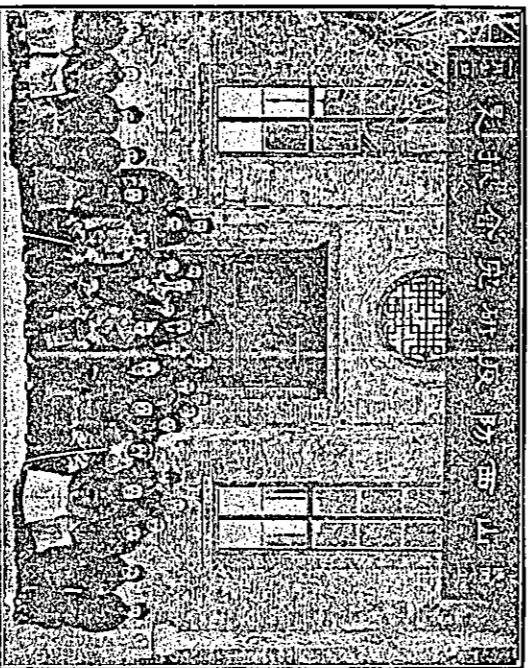
Public meeting called by Gov. Yen to celebrate the end the anti-plague campaign.



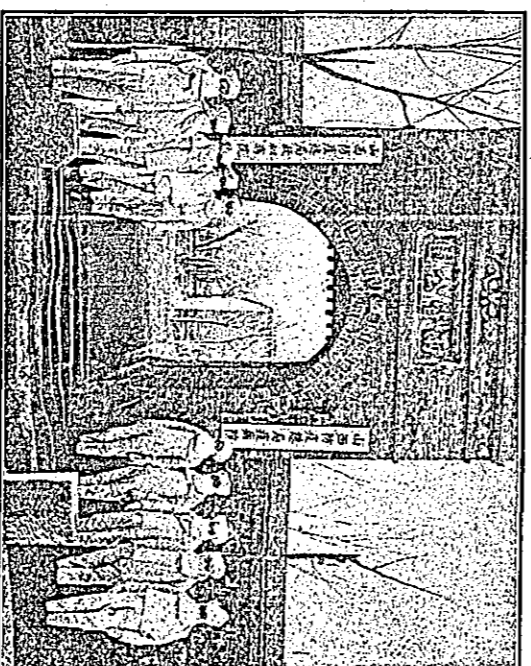
會館新址守長會源防國全史權局總表坊西圖

山西防戩紀略

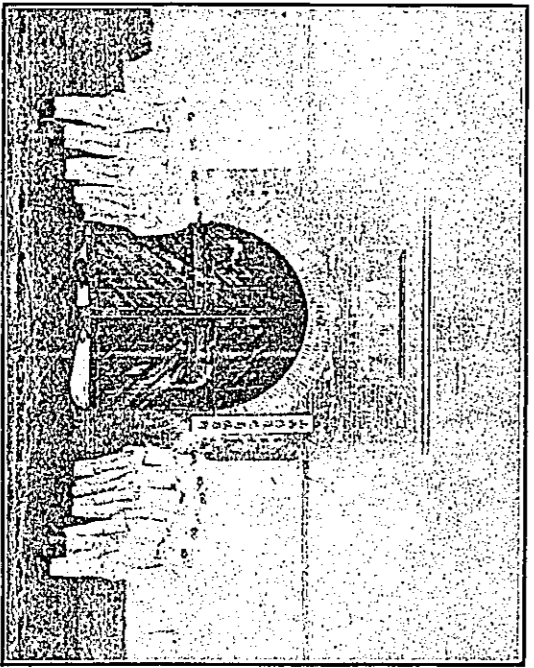




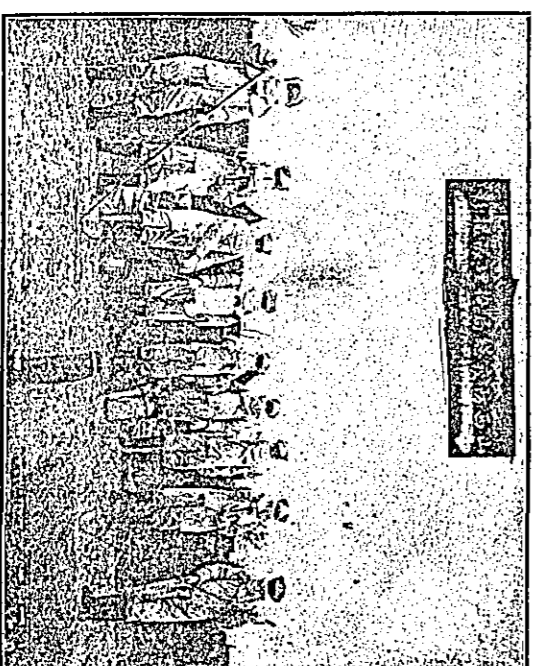
Speakers and officials at lecture on pneumonic plague given at Siam University, January 22, 1918.



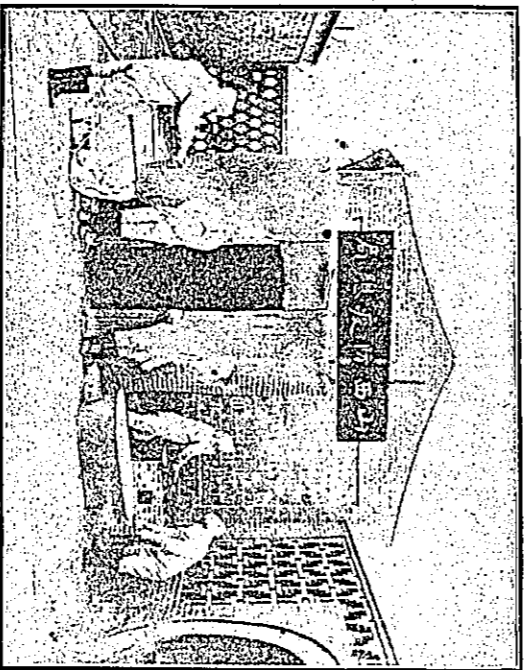
Entrance to Plague Hospital and Suspect Hospital.



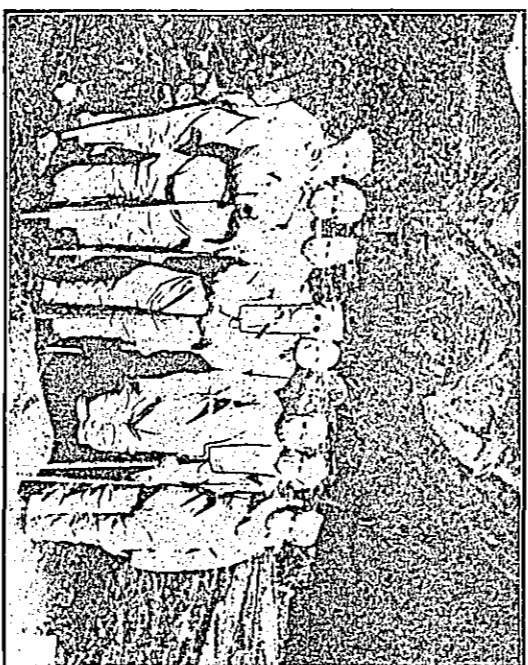
Entrance to Quarantine Station, City Station.



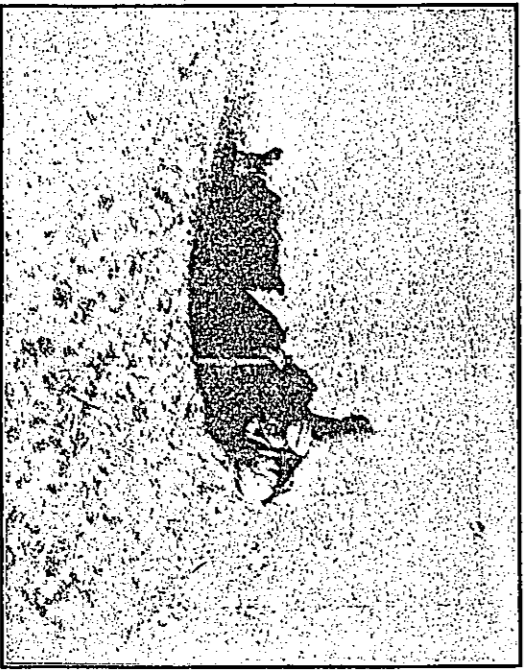
Burial Squad.



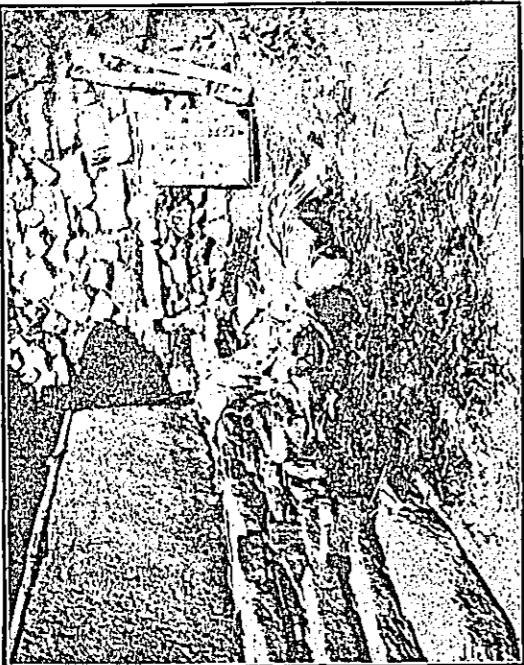
North Gate. Disinfection Rooms for Staff.



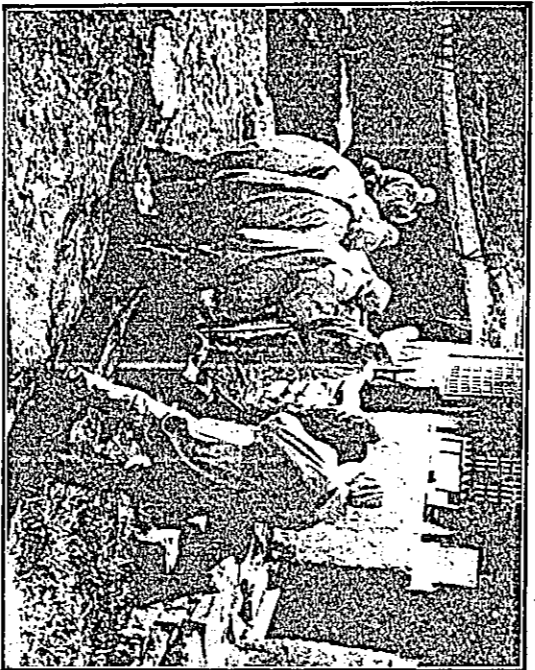
Eight of the Sanitary Corps ready for work.



Traveller who died of plague outside Taichow city.



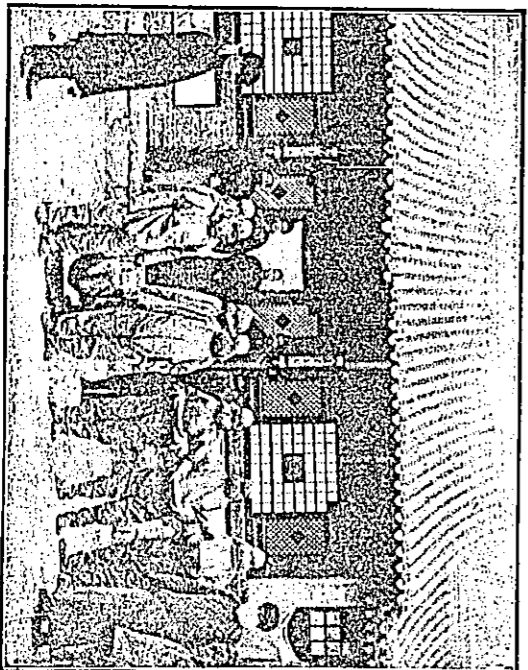
Three of the bodies found in the stown in No. 32.



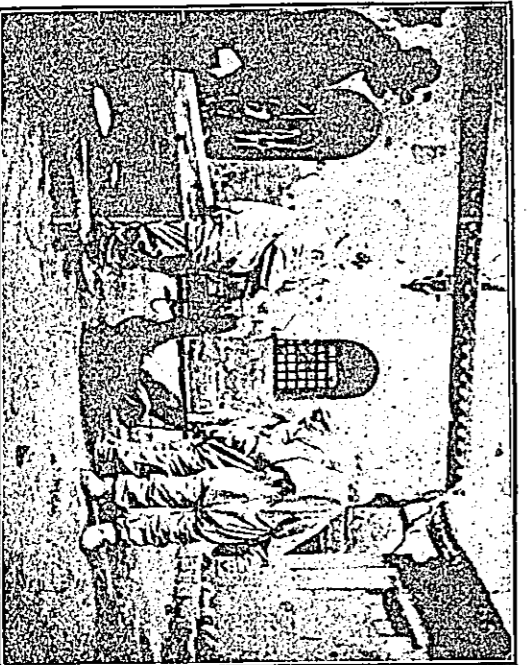
Burial Squad at work burying bodies from the house shown in No. 32.



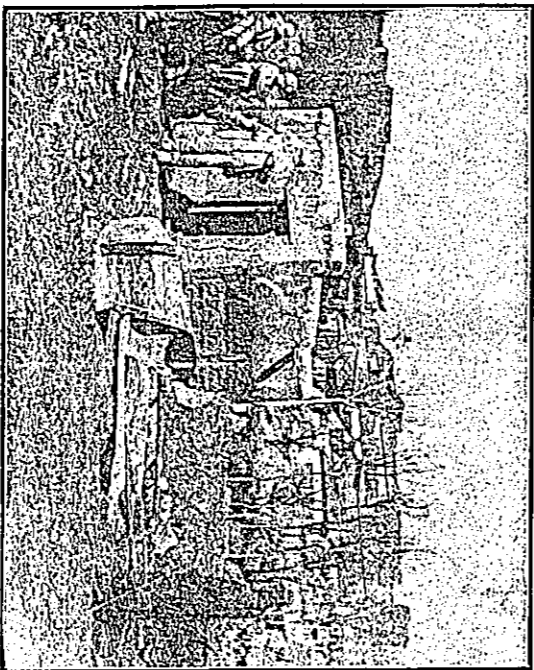
Burial Squad at work.



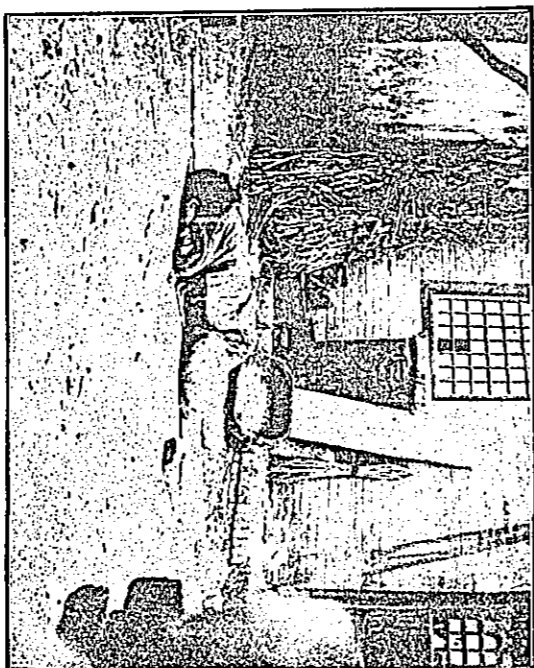
Dr. Brubaker and Burial Squad.



Encasing the father of the boy shown in 43.



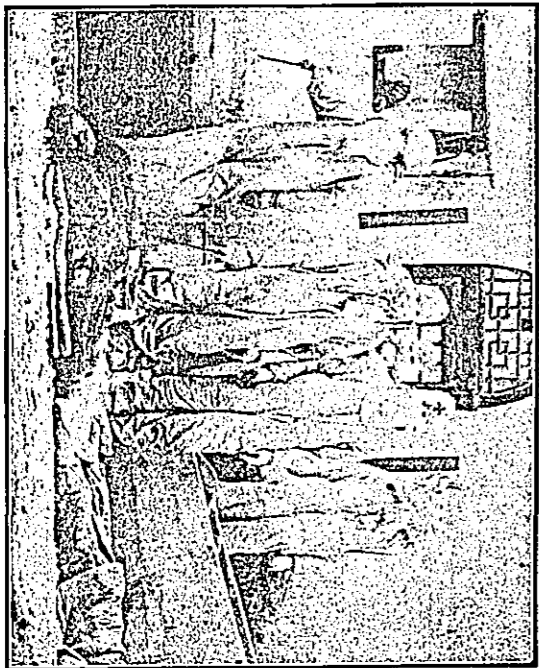
Burial of plague body shown in previous picture.



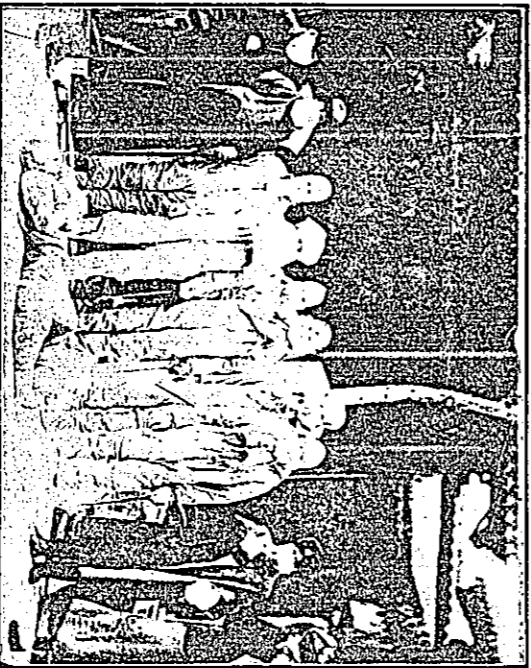
Two women, sick with plague fell down while crossing her court and expired where she fell.



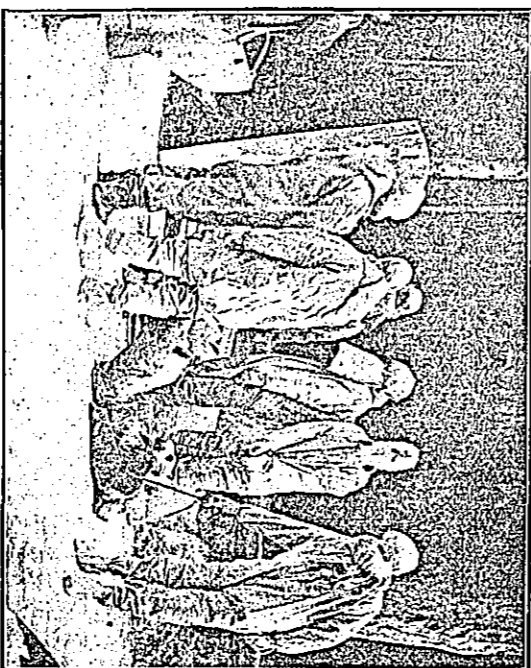
Burial of woman shown in previous picture.



Two sisters aged 75 and 64 died of plague the same day. The bodies are about to be encoffined.



Hsinhsien. Hsia T'ao Chuang, near Feng'sun. Burial of Chia San-lsien. His wife visited her parents in Feng'sun, was infected and in turn infected her husband and his mother.



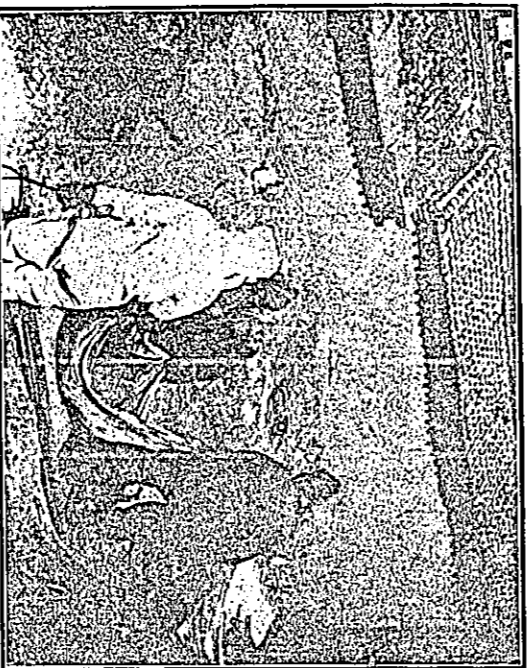
Encasement of Chia San-lsien.



Encasement of the wife of Chia San-lsien.



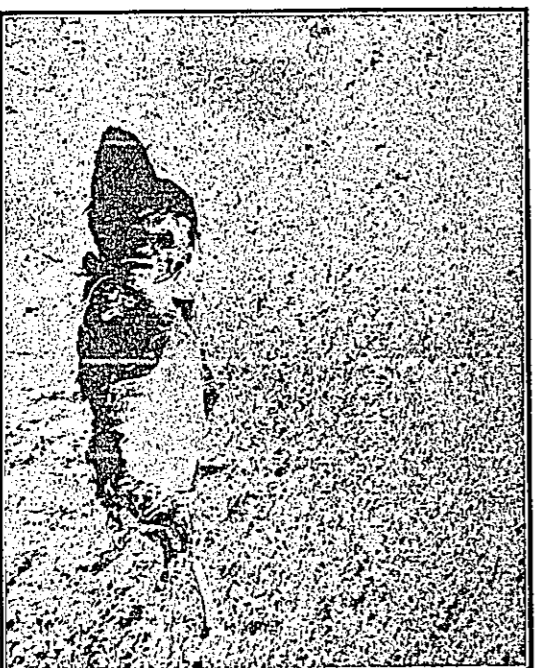
Encasement of policeman who died of plague.



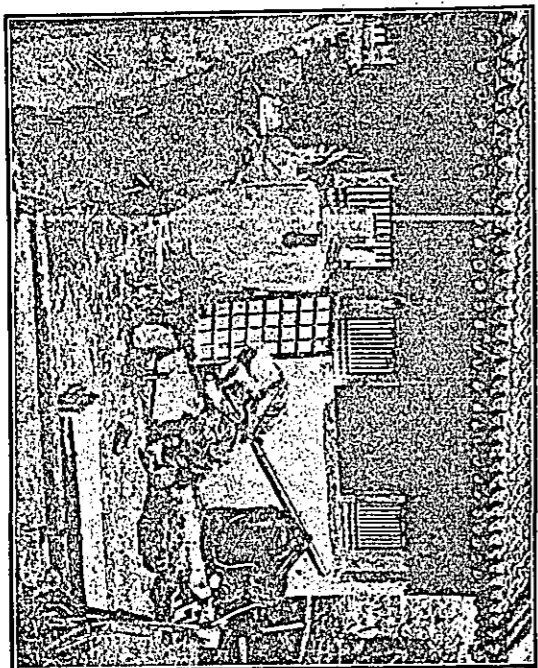
Shen Ch'ih-Hsien City. Burial of the father and mother of four children. One child died the next day and the other three, one day later.



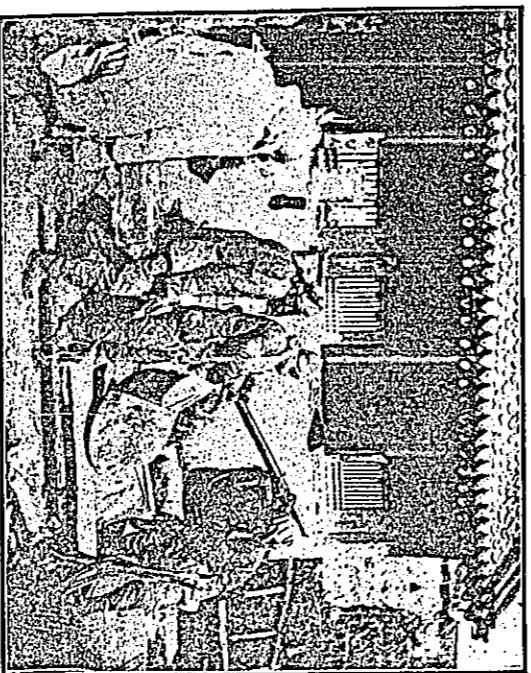
Shen Ch'ih-Hsien, Jen I T'sun. Dr. Wampler preparing slides from sputum of plague patients.



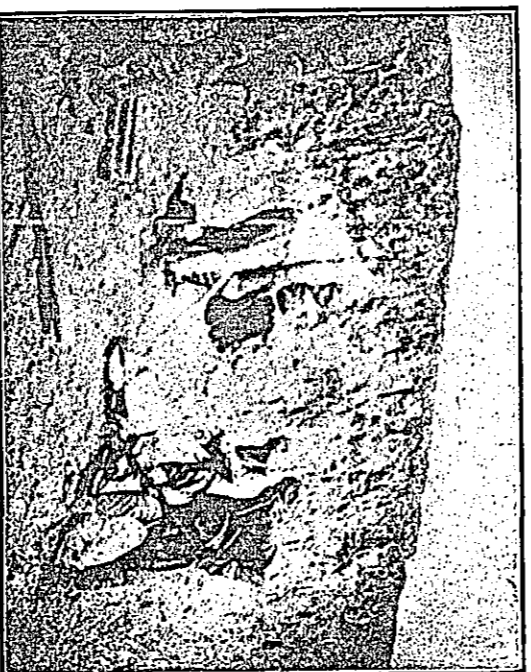
Body of boy partly eaten by dogs and birds.



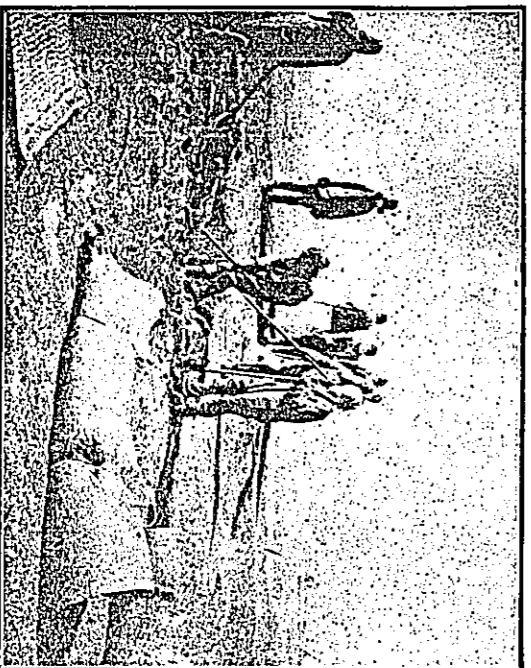
Two merchants from Honan who had returned from north of the Great Wall were taken in by this family. All the family except one woman died of plague (see 80). The face of the corpse against the house is covered with lime to disinfect the bloody sputum on it.



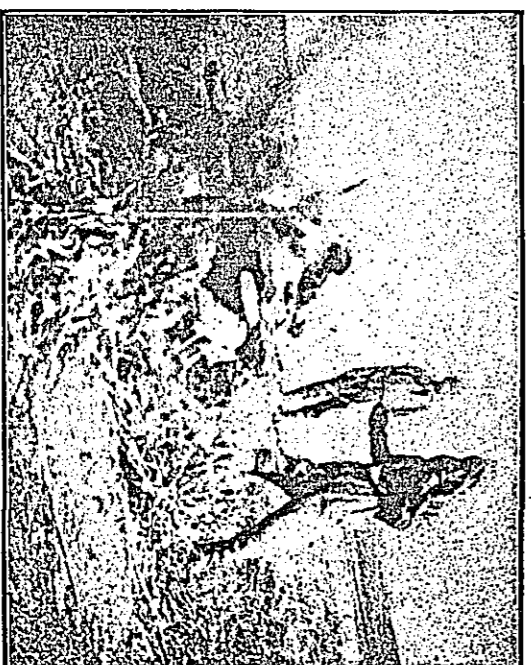
Burial of the bodies of the two Honan merchants who infected the family (see 78)



Wrapping body in mat to rebury.



Exhumation for reburial.



Exhuming body already partly buried by natives.



Reburial. Coffins in place.



Huai Jen Hsien. Burial Squad.



Natives "protecting" themselves from the "distributors of the plague" i. e. the foreign doctors.



Forced labor.

山西省疫事報告書

第一編

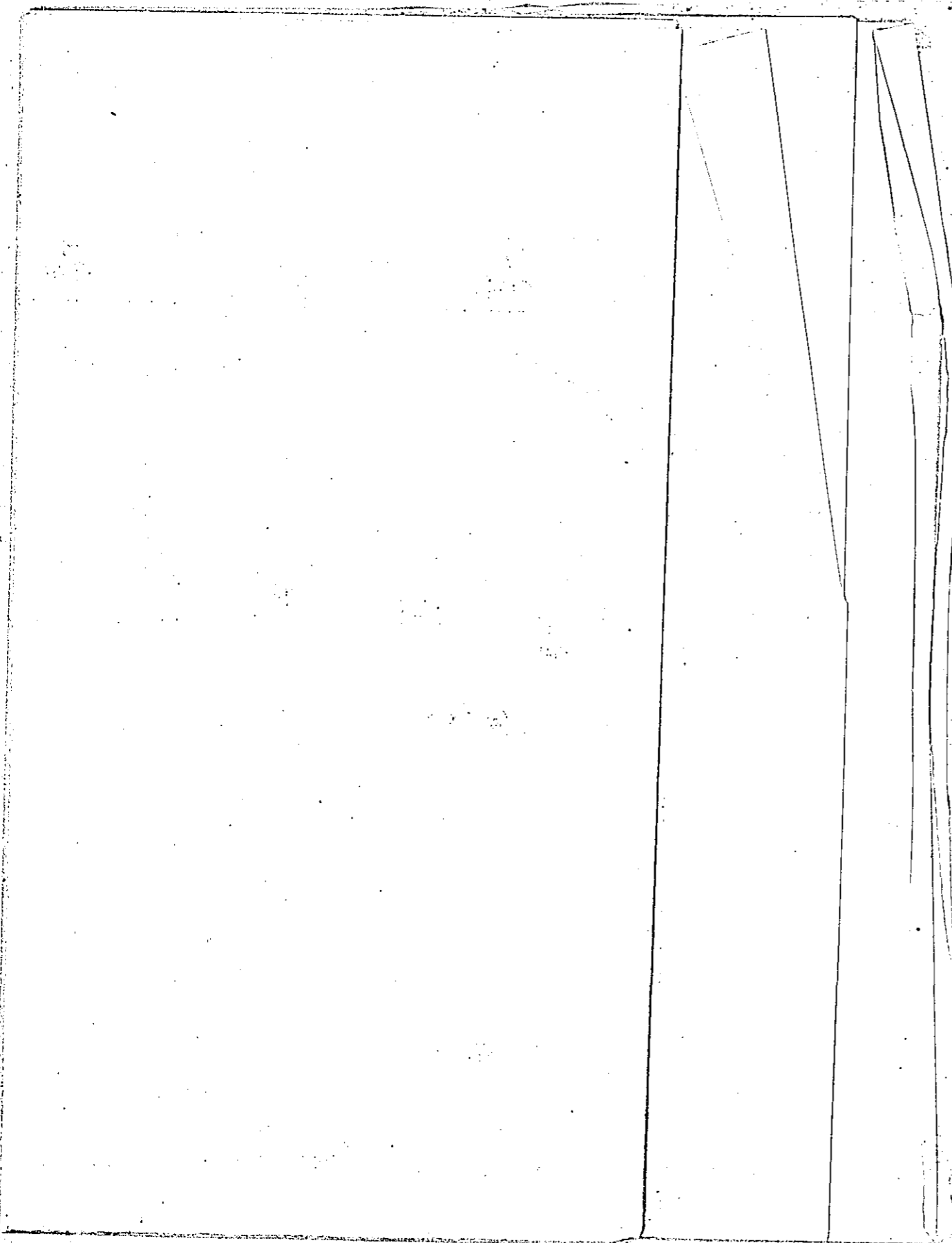
山西省疫勢蔓延情形

人類至慘痛之事莫慘於攫不治之疾而亡於非命當右玉縣疫發之始歷一晝夜同室俱斃相次沿邊各縣疫報踵至不十日而疫線延長七百餘里雁門南北幾無乾淨土迨二月十有二日復發現於武鄉之分水嶺而中部亦陷於恐怖之域統計兩月十有四日先後蔓延二十八縣死亡達二千六百六十四人噫慘矣先是六年冬十二月滬濱外報忽載山西五原發生鼠疫未幾京津各報亦有同樣刊載曩者萬國鼠疫研究會多數醫學專家僉以鼠疫導源於蒙古證以地理上生活上種種習慣或亦不可免之事實而況包薩密邇晉疆向爲晉商淵藪春出冬返歲以爲常萬一蔓延所及流毒胡可言喻獨是五原爲歸綏屬境自劃爲特別行政區域久不隸山西版圖卽欲偵察綏疫現狀終苦鞭長莫及迨至一月一日迭接中央電告始知最烈毒之惡疫已瀰漫於綏邊我軍政當局卽日下令遮斷交通嚴密檢查則南下行旅不可復返疫菌潛伏早已傳播越三日而疫作燎原之勢成矣迄今舊癘肅清心焉惻惻爰檢各種文電報告而覆按之則疫之發生時日與傳染路徑夫固彰彰可考者蓋自疫氛發現以後其蔓延時期雁門關北爲七十四日計斃二千二百六十三人雁門關南爲五十八日計斃四百零一人其疫勢最烈之日關北爲二月九號計斃一百人關南爲二月二號

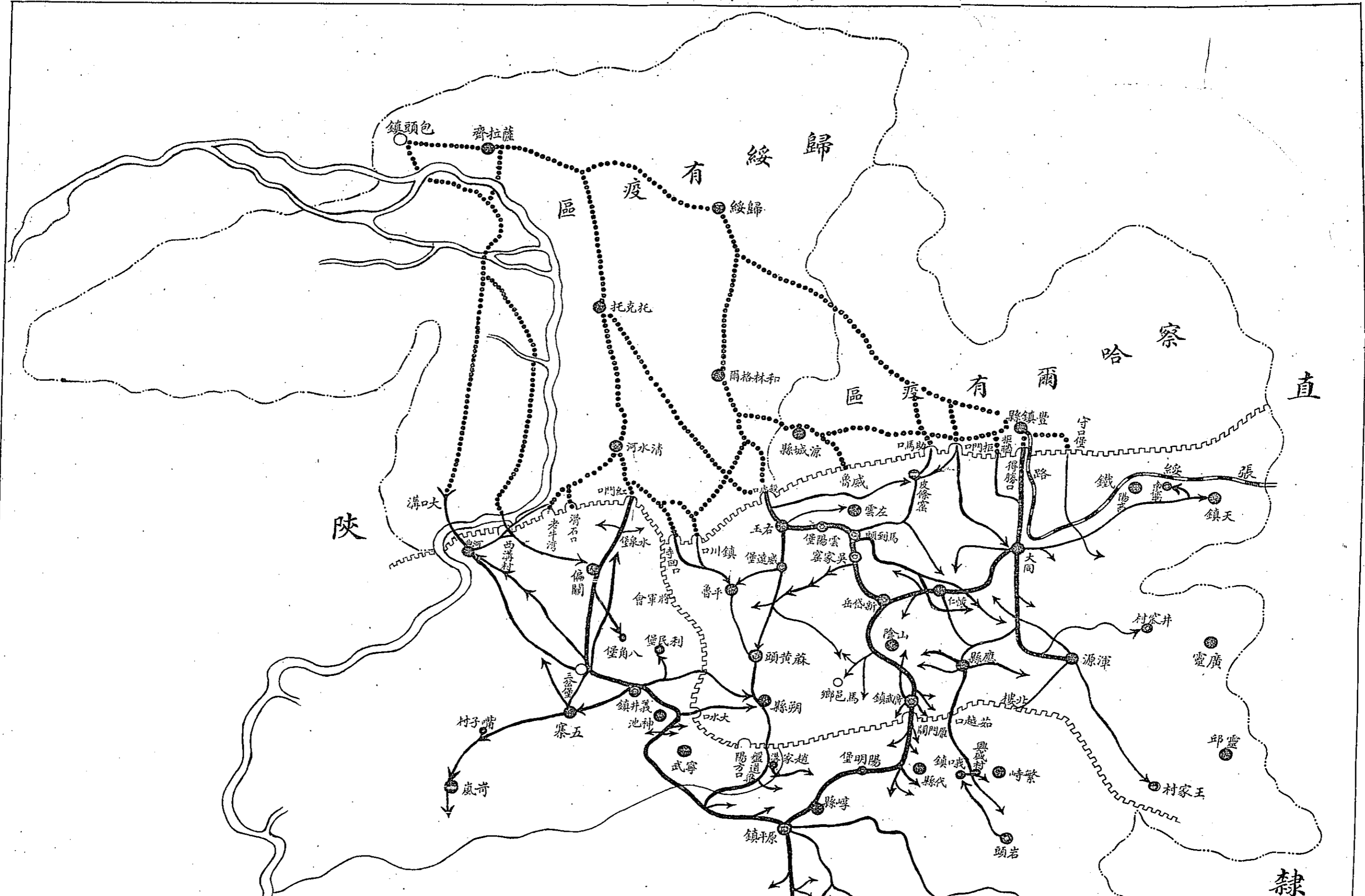
計斃二十七人合疫區二十八縣疫勢最烈之日亦為二月二號共斃二百零八人若以平均計算則關北七十四日每日均斃三〇、五八一關南五十八日每日均斃六、九一四統計蔓延七十四日每日均斃三十六人其各縣疫斃人數如左表

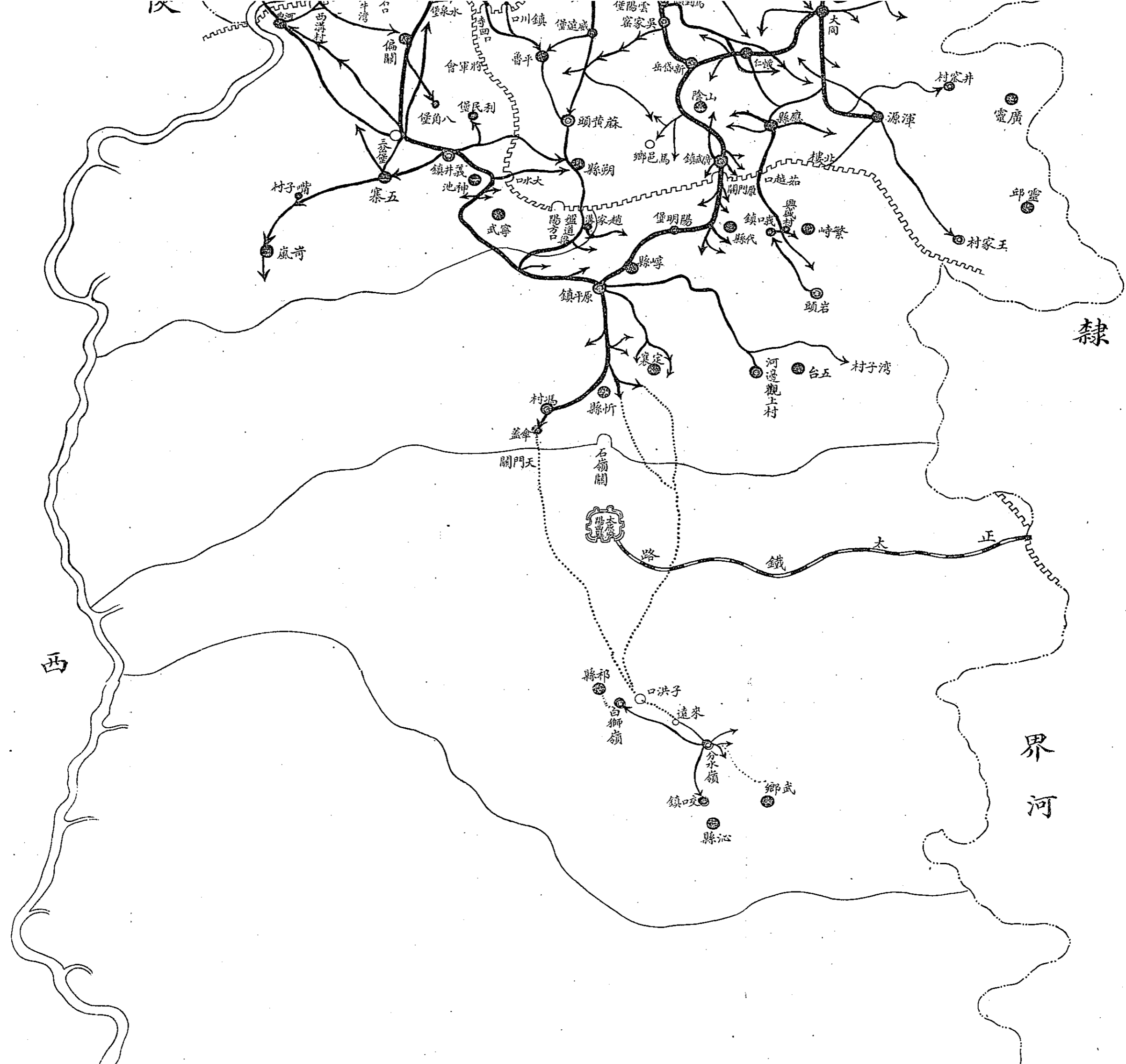
右玉縣	三七一	神池縣	三六四	應縣	二九三
山陰縣	一二四	左雲縣	一七八	渾源縣	一五七
大同縣	一三二	朔縣	一二一	代縣	一〇一
崞縣	一〇一	河曲縣	九八	忻縣	七二
繁峙縣	七〇	懷仁縣	六〇	五寨縣	六〇
平魯縣	五一	天鎮縣	四五	偏關縣	三四
寧武縣	二四	定襄縣	二三	武鄉縣	二三
崞嵐縣	二一	靈邱縣	一四	廣靈縣	一〇
五臺縣	六	祁縣	四	陽高縣	一
沁縣	一				

此疫勢輕重之大略也其發生撲滅地點則關北以右玉為發疫地至應縣而撲滅關南以代縣為發疫地至武鄉而撲滅至於各縣區疫氣之經路染疫之區域疫斃之人數特分述於後以資借鑑併誌全省疫氣傳導幹線支線如左圖



山西全省防疫線總圖





隸

西

界河

太原正

鐵路

石嶺關

關門天

本縣

縣祁

白獅嶺

遠來

分水嶺

鎮口交

縣沁

鄉武

村子灣

台五

河邊觀上村

鎮口我

縣代

興盛村

樓北

縣麻

仁城

陰山

岳岱新

密家吳

堡陽雲

堡遠威

口川鎮

魯平

會軍將

堡泉永

堡民利

堡角八

堡五

鎮井義

池神

口水大

武寧

陽通

家趙

堡明陽

縣呼

鎮平原

寨五

村子嘴

嵐奇

大同

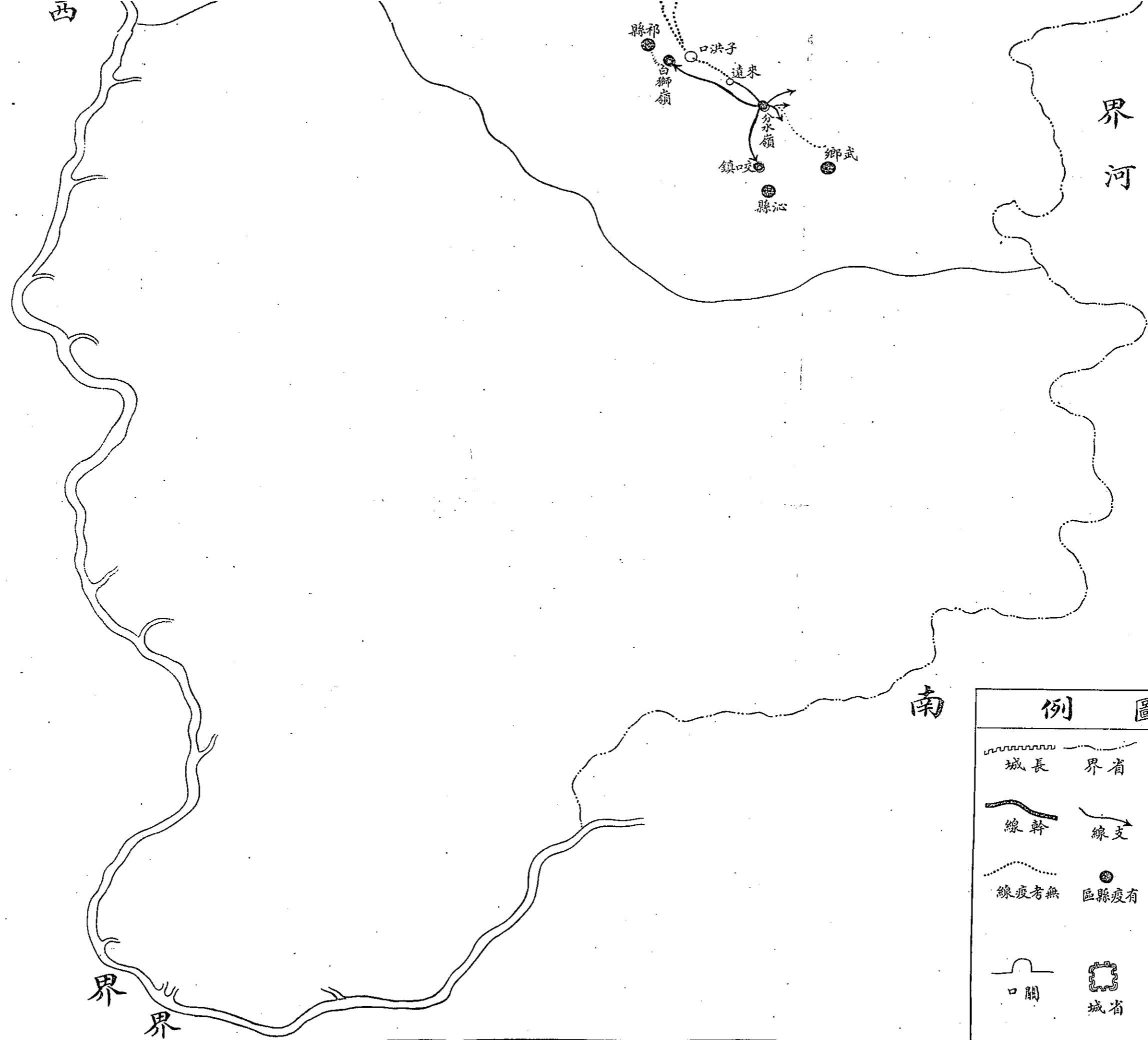
源潭

村家井

靈廣

邱靈

村家王



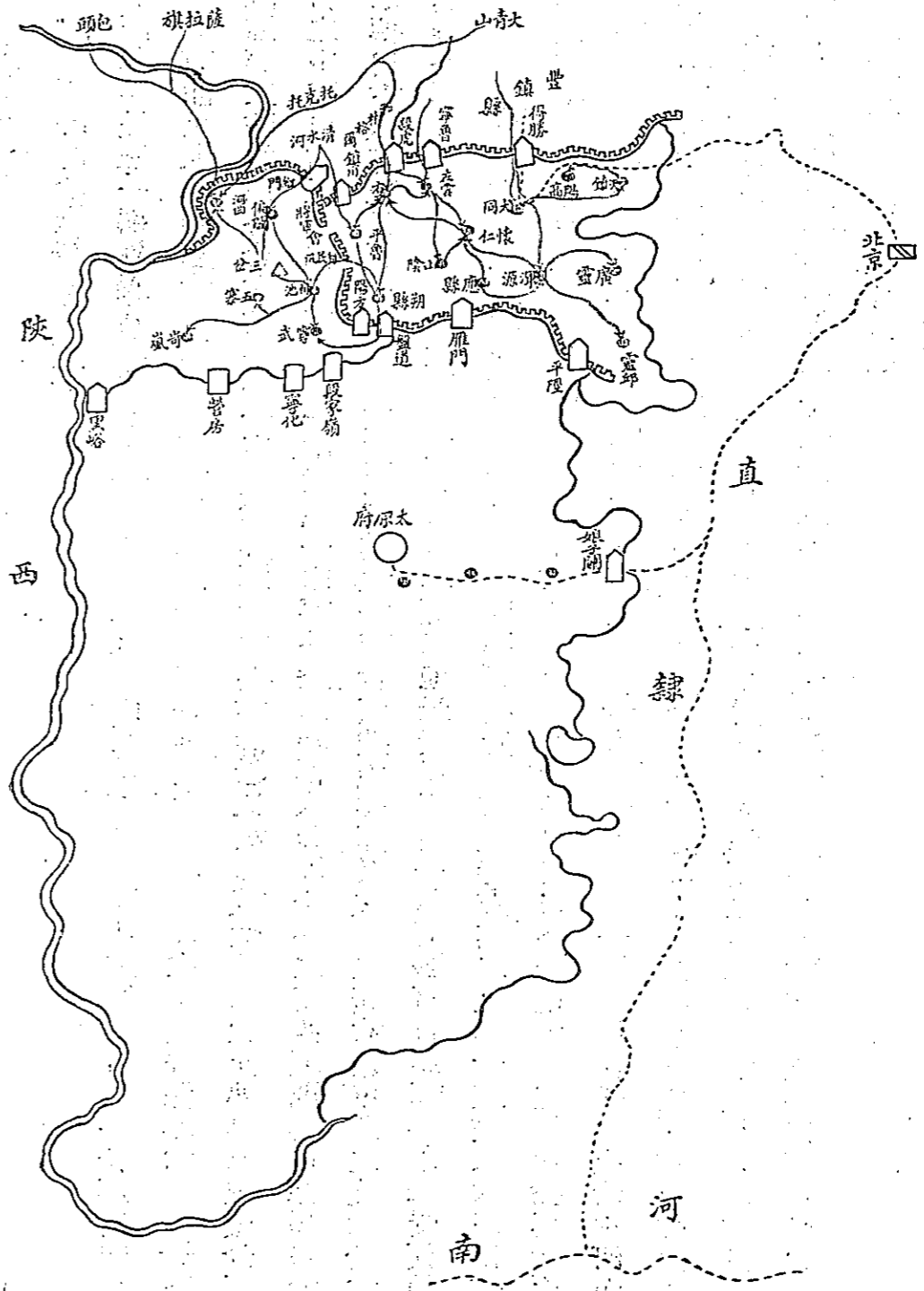
例 圖		

第一章

雁門關北疫勢蔓延情形

山西北界長城一稱外邊其內邊東起平陘關中互雁門西至陽方口折而北迄紅門口與外邊連接向稱關北地方即指大朔兩屬十有二縣而言內邊以西保寧六縣則關以南治之此次防疫併保寧六縣及崞嵐同劃歸第二防線以外合大朔爲第一疫區(即部定之第二疫區)以故區域較爲擴大而傳染路徑須分三段言之中路自右玉肇禍左雲繼之一由殺虎一由寧魯堡同時傳入腹地平魯之疫西境則傳自鎮川口北境則傳自右玉越三日而播及朔縣左雲之疫遵大路南行直達山陰延及代屬之廣武鎮東路之疫始於大同其時察屬之豐鎮疫氛正烈大同天陽爲張綏車經過地恐資導引自一月九號實行局部停駛未受何種影響惟得勝口爲南歸孔道大同首當其衝縣民運屍回籍疫乃作當是時左雲之疫亦分道侵入大同懷仁自同以東陽高天鎮疫氣間發自同以南而應縣渾源兩縣最烈皆縣民自口外染疫歸而輾轉傳播再折而東漸於靈廣疫勢稍輕矣自殺虎口左近遮斷交通旅綏晉人多繞道南下一則由托克托取道清水河而抵偏關一則越河西南行而至河曲河曲僅隔河代管地大口溝旋起旋滅偏關則由水泉堡而侵及神池比至神池義井鎮疫發迤西而五寨而崞嵐東南則直趨於寧武北境而偏關之將軍會神池之利民汛寧武之盤道梁復自中路之平魯朔縣侵入旁枝並蒂無法翦滅大朔寧保四屬倖免地方僅保德一縣而中部之崞嵐猶復波及甚矣滋蔓之難圖也

附 雁門關北疫線圖

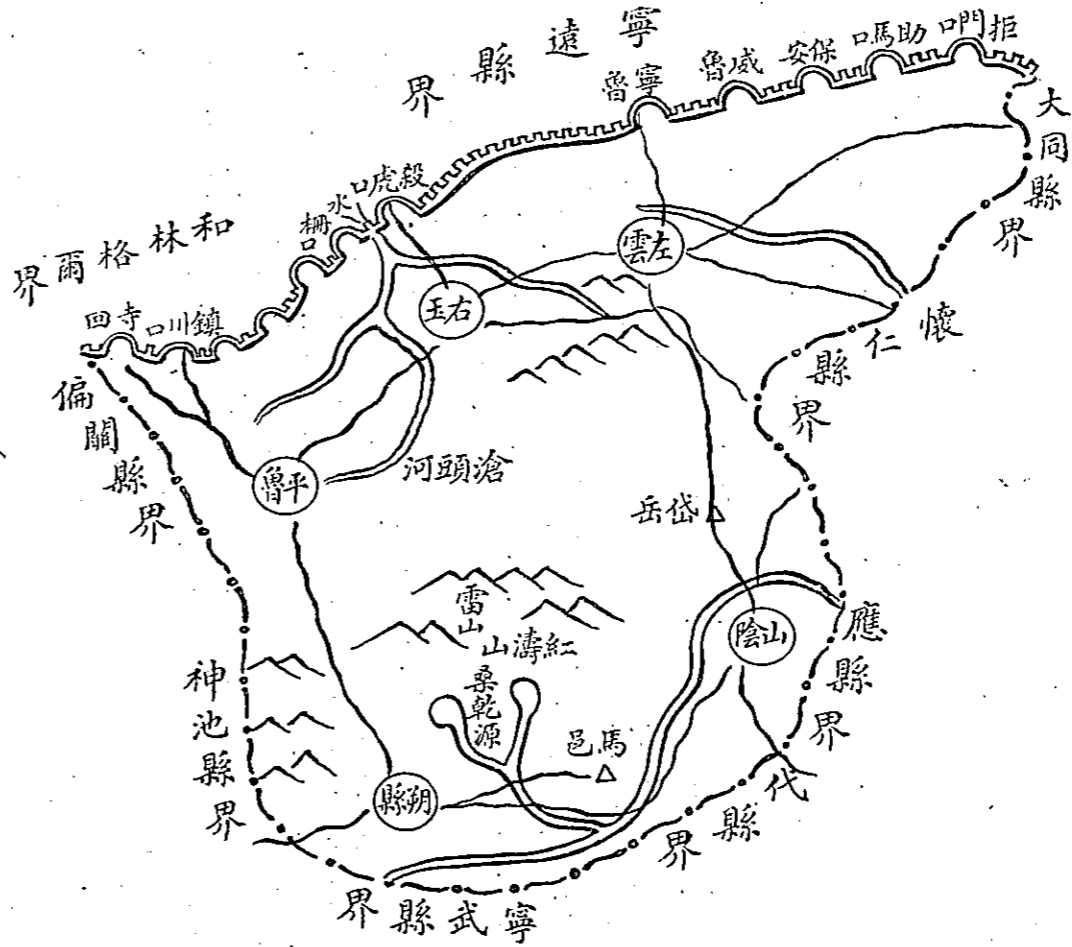


第一節

(甲)中路疫勢之蔓延

右玉爲舊朔平府治北枕殺虎口扼綏晉之交通往來行旅必經其地以故發疫最先染疫亦最烈而死亡人數直爲諸疫縣冠左雲之疫雖有傳自口北者而右玉亦東侵之於是循馬到頭逾山陰岱岳鎮不三日而直達雁門關北之廣武鎮南經威遠威坪兩堡稍折而西入平魯而平魯西北境已由鎮川傳入分道流行至朔縣而毒氣大作先是梁學貴(定襄人)武美元(直隸人)自後套歸行至右玉越宿身死次即返代商人董旺至左雲馬到頭暴病卒越五日山陰新岱岳亦報告疫斃過客三人相互傳染死亡枕藉至一月十八日朔縣麻黃頭有自河口地方來者四小時內同伴俱斃又越五日平魯之圍城店坪人民染疫者累累而縣南之井坪鎮復有染自朔之下窰口者疫勢剽忽有如疾風驟雨東馳西突而入於他境者茲不備載統計五縣其蔓延時期七十有四日以右玉爲始終至三月十九號乃滅共疫斃九百四十五人疫線如左圖

中路疫勢蔓延縣區圖

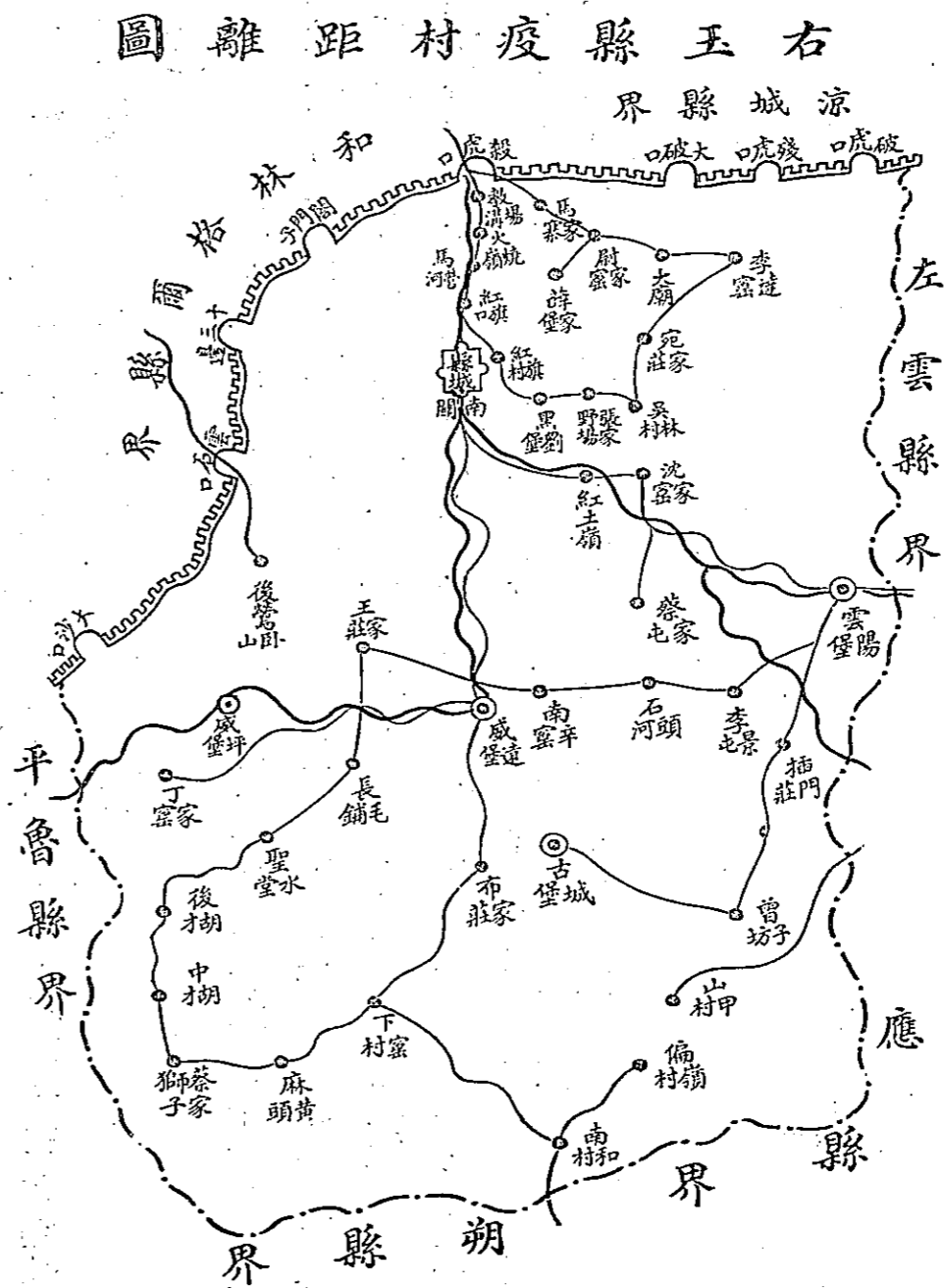


右玉縣

縣城距殺虎口僅二十里向為旅綏晉人入邊棲息之所此次疫氛導源於茲亦不能逃之劫數也茲將疫氛經路暨染疫區域疫斃人數分列於左以誌當日疫事之始禍云爾

(甲) 疫氛之經路

右玉疫氛自殺虎口侵入城關發現後遂分馳於北境自縣城起一線循左雲大道東南行延及東境之雲陽堡再南侵入會子坊古城堡一線循平魯大道南經威遠堡折入西境威坪堡其自左雲來者有西境聖水堂村民帶歸由東而西橫貫李景屯石頭河南辛窰子王家莊長毛舖至聖水堂中部之疫氛遂瀰漫矣至南境之布家莊下窰村麻黃頭蔡家獅子皆行旅自威遠堡緣山涉險繞越南下而走朔應是以延及若夫中部之後鶯臥山村東南境之山甲村一由村民范大滿由和林格爾間道歸里一由村民韓天祥染自懷仁總計全縣疫線南北約長一百七十餘里東西約長九十餘里附圖如左



疫村距離說明

查縣屬紅旗口距縣城三里北距馬營河三里馬營河距火燒嶺四里火燒嶺距教場溝五里教場溝距馬家寨十里縣城距紅旗村二里紅旗村距黑劉堡八里黑劉堡距張家野場三里張家野場距吳林村五里吳林村距宛家莊八里宛家莊距李達窰十里李達窰距大廟八里大廟距尉家窰六里尉家窰距馬家寨五里距薛家堡五里吳林村距紅土嶺十八里距沈家窰八里沈家窰距蔡家屯十五里蔡家屯距石頭河八里石頭河距李景屯十里李景屯距雲陽堡八里雲陽堡距插門莊十里插門莊距曾子坊二十里曾子坊距山甲村十五里山甲村距偏嶺村十四里南和村二十里南和村距下窰村二十五里下窰村距麻黃頭六里麻黃頭距蔡家獅子十三里蔡家獅子距中胡才溝十里中胡才溝距後胡才溝十里後胡才溝距聖水堂十五里丁家窰十五里聖水堂距長毛鋪十三里長毛鋪距王家莊二十里王家莊距後鶯臥山村十八里威遠堡距古城堡十五里南辛窰子四里古城堡距布家莊六里

(乙) 染疫之區域

全縣劃分七區染疫村莊計三十九處初發於城廂終止於宛家莊計蔓延四十七天以四區為最重而染疫有十村幾佔全縣四分之一之疫地一區合城關附近七村計之其重與四區等五七兩區次之三六兩區又次之以二區為最輕其間惟第一區之紅旗口紅土嶺吳林村中止而復發流播十七日始行撲滅茲將各區發疫撲滅日期列表如左

區	別染疫村名	初發日期	復發日期	撲滅日期	疫斃人數	疫勢重輕
---	-------	------	------	------	------	------